

Quantifying Wheat Flour Exported and Imported in Processed Food Commodities

S. Patricia Batres-Marquez and Helen H. Jensen

Staff Paper 02-SR 110

September 2002

**Center for Agricultural and Rural Development
Iowa State University
Ames, Iowa 50011-1070
www.card.iastate.edu**

S. Patricia Batres-Marquez is an assistant scientist and Helen Jensen is professor of economics, Iowa State University, Ames, IA. E-mail: hjensen@iastate.edu

This publication is available online on the CARD website: www.card.iastate.edu. Permission is granted to reproduce this information with appropriate attribution to the author and the Center for Agricultural and Rural Development, Iowa State University, Ames, Iowa 50011-1070.

The research was supported in part by CSREES/USDA Fund for Rural America through the University of Arizona under contract Y481442. We acknowledge helpful advice and suggestions from Linda Kantor and Gary Vocke, ERS/USDA, and Annetta Cook, ARS/USDA, during various stages of this study.

Iowa State University does not discriminate on the basis of race, color, age, ethnicity, religion, national origin, pregnancy, sexual orientation, gender identity, genetic information, sex, marital status, disability, or status as a U.S. veteran. Inquiries can be directed to the Interim Assistant Director of Equal Opportunity and Compliance, 3280 Beardshear Hall, (515) 294-7612.

Quantifying Wheat Flour Exported and Imported in Processed Food Commodities

By

S. Patricia Batres-Marquez and Helen H. Jensen
Center for Agricultural and Rural Development
Department of Economics
Iowa State University

September 24, 2002

The research was supported in part by CSREES/USDA Fund for Rural America through the University of Arizona under contract Y481442. We acknowledge helpful advice and suggestions from Linda Kantor and Gary Vocke, ERS/USDA, and Annetta Cook, ARS/USDA, during various stages of this study.

Quantifying Wheat Flour Exported and Imported in Processed Food Commodities

Introduction

Wheat is the major grain product eaten in the United States, with wheat flour and other products representing 75 percent of total grain consumption in 1997 (Putnam and Allshouse, 1999). The United States is the world's leading wheat exporter. Wheat and wheat products represented 6.63 percent of agricultural exports by value in 2001, and averaged 8.22 percent over the period 1995 through 2001. U.S. imports of wheat grain are small compared with exports. During the same period, 1995 through 2001, wheat imports were 1.48 percent of agricultural imports by value (USDA, FATUS, 2002). In 2000/01 wheat flour and products (uncooked pasta, couscous, wheat pellets) made up 3.7% of the total 1.1 billion bushels wheat exported and the remainder was wheat grain (USDA, ERS, 2002)

An estimate of the amount of wheat flour consumed in the U.S., or “disappearance”, is calculated as a residual from the total wheat flour supply less exports. Because wheat flour is used to produce a wide variety of wheat-based food products, it is important to identify any discrepancies between the reported quantities of wheat flour available for consumption in the food supply data and actual wheat flour available for consumption. One source of such discrepancies is the fact that the food supply estimates do not account for the amount of wheat flour used in the production of food items such as cookies, mixes and dough, breads, and biscuits in the estimates of imports and exports. At present, the import and export (hence food supply) data account only for trade in wheat flour used in uncooked macaroni and noodle products.

By knowing the amount of wheat flour used in the production of wheat-based foods that enter international markets, food supply data can be adjusted to measure the disappearance of wheat more accurately. In this report, we consider adjustments only to wheat flour estimates. Wheat is also exported and imported as grain.

Data

In order to address the problem that food supply data do not account for trade of wheat in many processed products, it is necessary to estimate the wheat component of the exports and imports

Export and Import Data

The export and import data are available from the USDA Foreign Agricultural Service (<http://www.fas.usda.gov/ustrade/>), originally compiled by the U.S. Census Bureau. The data are reported in metric tons (MT), and net of packaging. The years selected for this analysis were 1995 through 2001.

Export and import codes are based on the Harmonized Tariff System (HTS). Export codes, identified as Schedule B, are administered by the U.S. Census Bureau. We used the classification of export grain products that is based on the 2001 Schedule B, Chapter 19 (Preparations of Cereals, Flour, Starch or Milk; Bakers' Wares -- <http://www.census.gov/foreign-trade/schedules/b/2001/schdb.txt>).

Import codes are administered by the U.S. International Trade Commission (USITC). We used the classification of import grain products that is based on the 2002 Harmonized Tariff Schedule of the United States, Chapter 19 (Preparations of Cereals, Flour, Starch or Milk; Bakers' Wares-- <http://dataweb.usitc.gov/SCRIPTS/tariff/0203c19.pdf>).

Chapter 19 export and import codes are presented in Table 1 and Table 2, respectively. Export and import codes differ for specific categories (at the ten digit level); however more broadly defined trade commodity groups can be identified in both because for the more general categories (at the six and eight digit level), codes are the same within each group. For some particular commodities import and export codes are the same (see tables 3 and 4).

Five general commodity groups are identified as Group 1-5. Group 1 (heading 1901.20) includes mixes and dough for the preparation of bakers' wares of heading 1905. Group 2 (heading 1902) includes pasta whether or not cooked or stuffed (with meat or other substances) or otherwise prepared. This group also includes couscous. Group 3 (heading 1904) includes prepared foods obtained by the swelling or roasting of cereals or

cereal products, cereals (other than corn) in grain form or in the form of flakes or other worked grains (except flour and meal), pre-cooked or otherwise prepared. Group 4 (heading 1905) comprises bread, pastry, cakes, biscuit and other baker's wares, whether or not containing cocoa. This group also includes corn chips and similar savory snack foods and pizza and quiche. Group 5 includes other unassigned commodities; this group was not included in the analysis because the definitions of those commodities were very general and the amount of exports and imports by weight were very small (with the exception of exports of corn-soya milk blends and imports of food preparations of flour /starch/dairy etc, nesoi and communion/ sealing wafer rice ppr. empty capsules).

Food Commodity Data Files and Technical Support Databases for CSFII 1994-96, 1998

The Food Commodity Intake Database (FCID) from the Environmental Protection Agency (EPA) provides intake data in terms of food commodities (e.g. wheat flour and egg) rather than foods as consumed (noodles). FCID includes over 500 commodities used as ingredients in US food products. Wheat flour (white) and wheat grain (which includes whole kernel, cracked wheat, whole grain flour, bulgur and couscous) are two of the commodities we used in our analysis. In the FCID, each food is identified by a unique 8-digit food codes and is expressed as amount of commodity (e.g., wheat flour) per 100 grams of food (e.g., cake). The FCID is based on the foods reported in the USDA's 1994-96 Continuing Survey of Food Intake by Individuals (CSFII 1994-96) and its Supplemental Children's Survey (CSFII 1998). We selected food codes that matched most closely the export or import (hence trade) food products in groups 1 to 4 (see appendixes A and B). A food science and human nutrition specialist from Iowa State University reviewed the list of selected USDA food codes used to match the reported food products exported and imported for appropriateness and accuracy.

USDA's Technical Support Files (TSF) for CSFII 1994-96, and CSFII 1998 include food codes, nutrient values, and recipe databases. We used the Recipe Header and Recipe Ingredients from the Recipe Database for additional adjustments needed to obtain the estimate of wheat flour exported/imported in product from the USDA foods that are reported in a form "as eaten".

Procedures

A graphic description of the process used to determine the amount of wheat flour exported in the form of processed products is presented in Figure 1. The figure provides an overview of the process used to estimate wheat flour exports, further described in detail in this report. The revised estimates will be compared to the current estimates obtained for wheat flour from the supply and utilization tables (for wheat flour and wheat flour in processed products). As figure 2 shows, the same procedure was followed to estimate the amount of wheat flour imported in the form of processed products.

Estimating Conversion Factors

The revised procedure started by classifying the food product export/import data (2001 schedule B, Chapter 19; 2002 Harmonized Tariff Schedule of the United States, Chapter 19) in five groups. Then based on the EPA food commodity data files (FCID), we selected food codes and their corresponding wheat flour amount per 100 grams of food that matched most closely the trade groups (1 to 4). We also used the USDA Technical Support Files (TSF) when the amount of wheat flour reported in the FCID needed adjustment. These amounts of wheat flour per 100 grams of food are the “conversion factors. Multiplying the conversion factors by the export (import) amount of food product for groups 1 to 4 (reported by weight) yields an estimate of the amount of wheat flour in exported (imported) product.

The revised procedure differs from the one currently in use by USDA both in refinement of the technical conversions used for pasta products, and also by including new conversion factors to estimate the wheat flour from wheat products such as mixes and dough, prepared cereals, breads, cookies and other similar products exported and imported.

Two methods were developed to adjust the wheat flour amount reported by FCID, as needed. Following advice from USDA’s Community Nutrition Research Group (Cook, 2000) we converted the wheat flour amount in cooked food (e.g., cakes, cooked pasta) to the wheat flour amount in uncooked foods (e.g. cake dry mix, uncooked pasta). Appendix C describes these methods. To do these conversions we used the Recipe Database, which is part of the TSF. For each food (food code) there is a recipe in the

Recipe Database that includes amount of each ingredient, as well as, moisture change during cooking.

As indicated, we developed conversion factors for the Food Product Groups 1 to 4. For Group 1, we used one conversion factor for all the trade codes in the group. This conversion factor was the average of the wheat flour amount in the selected food codes representing the trade codes for that group. In Groups 2, 3, and 4, we used more than one conversion factor within each of these groups because the component traded foods varied considerably in their composition. In some cases each trade code had its own set of food codes representing it. In other cases, several trade codes were represented by one food code. Whenever more than one USDA food code was used for a trade product or group, the conversion factor was the average of the wheat flour amount in the corresponding food codes. When only one food code represented several trade codes the conversion factor was the amount of wheat flour contained in the food (food code). The conversion factors are expressed in grams of wheat flour per 100 grams of food product, (see appendixes A and B for the list of conversion factors estimated).

The FCID provides the amount of wheat flour required to produce 100 grams of the food (cooked). For Group 1 (dry mixes), we converted the amount of wheat flour in the cooked food (e.g., cake) to the amount of wheat flour in the dry food (dry mix) using the USDA technical support files (see Appendix C, Method A).

For Group 2 products (only in the case of uncooked pasta), we followed a different procedure to convert the amount of wheat flour in cooked pasta to the amount of wheat flour in uncooked pasta trade product. Uncooked exported (imported) pasta has two types of pasta products, pasta without eggs and pasta with eggs. Our approach to estimate the conversion factor in this case was to select a food code (a pasta product without eggs) whose main ingredient was wheat flour and a small quantity of salt. The wheat flour amount in this cooked pasta represented 100 grams of wheat flour per 100 grams of uncooked pasta without eggs. Wheat flour in uncooked pasta with eggs was estimated by dividing the amount of wheat flour in cooked pasta with eggs by the amount of wheat flour in cooked pasta without eggs. Conversion factors for pasta products packaged frozen or canned were obtained directly from the data without further adjustment (see Appendix C, Method B).

Group 3 (cereals) includes dry (ready-to-eat cereals) and precooked or otherwise prepared cereals. For dry cereals, we selected food codes for which the FCID provides the amount of wheat flour per 100 grams of cereal without any liquid. For precooked cereals we selected food codes for which the FCID provides the amount of wheat flour per 100 grams of cooked cereal. Therefore no adjustment, or conversion of the reported product weight, was necessary for this group.

For Group 4 (bread and similar products), we made no adjustment to the wheat flour amount as reported in the FCID since this group includes food products cooked or ready-to-eat.

Applying Conversion Factors to the Trade Data

The amount of exports in each of the selected groups was multiplied by the corresponding conversion factors. The result is the amount of wheat flour exported from the group. In the cases where there was more than one conversion factor per group, the amount of wheat flour exported for that group was the sum of the wheat flour estimated for each export code or subgroup. The sum of wheat flour exported from the four groups was used to calculate the amount of wheat flour exported in the form of wheat products.

The same procedure as developed for export data can be followed to estimate the amount of wheat flour imported as product.

Results

Exports

Figures 3 and 4 show the amount of wheat flour exports based on current estimates and the revised estimates. The current export estimates for 2000 is 16,053 (1,000 hundredweight) for wheat flour and 1,685 (1,000 hundredweight) for wheat flour as products (macaroni and noodle products), or a total flour equivalent of 17,738 (1000 hundredweight). The wheat flour in these products represents 9.5 percent of the total. The levels of wheat flour exports in 2000 are below those of 1995, but represent an increase since the lows of 1996 (Figure 4).

Our estimate indicates that there were exports of 6,233.33 (1000 cwt) of wheat flour export as products in 2000, and total wheat flour export amount of 22,286.33 (1000

cwt). Under these revised estimates, wheat flour products represent 28.0 percent of the total wheat flour exports (see Tables 5.1 and 5.2).

Figure 5 shows that up to 1998 the new estimates of wheat flour exported in uncooked pasta are similar to the current estimates. For 1999 and 2000 the difference between the current and new estimates increases. Different sources of export data seem to be the reason of this discrepancy.

Figure 6 indicates that when we add the wheat flour exported from the other three groups (mixes, cereals, and bread and similar products) the difference between current and new estimates is substantial.

As shown in Figure 7, group 4 (bread and similar products) contributed to more than two-fifth (42 percent) of the wheat flour exported in wheat valued added products in the year 2000. Over one-fifth (23 percent) of the wheat flour exported in 2000 was from mixes and 11% was from cereals.

Imports

The wheat flour import current and revised estimates are shown in Tables 7 and 8. In 2000 the current import estimates is 3,373.60 (1000 hundredweight) for wheat flour and 6,289.40 (1000 hundredweight) for products (macaroni and noodles), for a total wheat flour imports of 9,663 (1000 hundredweight) during that year. The wheat flour in products represents 65.1 percent of the total. The new estimates of wheat flour imports as products in 2000 are 12,791.08 (1000 hundredweight) for a total wheat flour import of 16,164.68 (1000 hundredweight). The revised estimates indicate that product imports represent a 79.1 percent of the total imports (see also Figures 9).

As Figure 10 indicates, from 1995 to 2000, current wheat flour import estimates have experienced only small variations through the period. Current wheat flour imports in 2000 are 8.35 percent higher than in 1995. In contrasts, the new estimates indicate that wheat flour imports have steadily increased throughout the period. Under the revised estimates, in 2000 the new wheat flour imports are 32.45 percent higher than in 1995.

Figure 11 shows that current and new estimates of wheat flour imports as uncooked pasta are similar. Figure 12 indicates that adding the wheat flour from imported mixes, cereals, and bread and similar products to the new wheat flour imports

estimates increases the gap between the current and new estimates. In 2000, the new wheat flour imports as products is more than twice the current estimates. As shown in Figure 13 Group 2 (pasta) represented 49 percent of the wheat flour imported as products in 2000. Thirty nine percent of the imported wheat flour as products comes from Group 4 (bread and similar products) during 2000.

Net Trade

Table 9 presents a summary of current and new estimates of exports and imports. The net trade under both current and new estimates is positive. During the first three years of the analyzed period the net trade is larger under the new estimates but continually approaching the current net trade value, however, this trend is reversed for the last three years of the analysis. Mostly because current estimates of imports of wheat flour as products have been fairly stable during the analyzed period. All the other components of the net trade under either current or new estimates have increased during the 6 years analyzed.

Tables 10 and 11 show that the U.S. imports of wheat flour as products (mixes, pasta, cereal and bread) were larger than exports in 2000. Canada was the main trading partner of these products during that year (see Figures 8 and 14). This could be the result of trade liberalization agreements and accessibility to markets that exists between two countries. The U.S. exported 59.77 percent (372.5 million pounds) of the wheat flour as product, mainly bread and pasta, to Canada. The U.S. also exported a smaller proportion to Japan (9.8 percent) and Mexico (8.7 percent).

On the other hand, 43.3 % (or 553.23 million pounds) of the imported wheat flour as product (mainly bread, pasta, and mixes) came from Canada in 2000. In addition, 50.2 percent (316.42 million pounds) of the wheat flour imported as pasta came from Italy. The U.S. also imported 117.97 million pounds of wheat flour mainly as pasta and bread from Mexico.

Reference

Putnam, J.J and J.E. Allshouse. 1999. Food Consumption, Prices, and Expenditures, 1970-97. USDA Agricultural Research Service.

USDA, Foreign Agricultural Trade of the United States (FATUS). n.s.

<http://www.fas.usda.gov/ustrade/> (accessed 06-03-02).

_____, Economic Research Service. n.d. Briefing Room: Wheat (Recommended Data Products: Trade Tables.) <http://www.ers.usda.gov/briefing/wheat/> (accessed 03-04-02)

Cook, Annetta, 20001. Personal Communication, June 14, 2001.

Data sources

Export and import data USDA Foreign Agricultural Service (www.fas.usda.gov/ustrade/), originally compiled by the Department of Commerce, U.S. Census Bureau, Foreign Trade Statistics.

Current wheat flour exports (Supply and Utilization table) Estimates: ERS/USDA (internet: www.ers.usda.gov/Data/FoodConsumption/spreadsheets.asp)

New Estimates : Food Commodity Intake Database (FCID); Technical Support Files (TSF) from Continuing Survey of Food Intakes by Individuals (CSFII 1994-96,1998).

Table 1. Exports Codes, Chapter 19: Prep Cereal, Flour, Starch or Milk; Bakers Wares (Schedule B Codes-2001)—Complete list

| Code | Food Item Description (Kg.) |
|------------|---|
| 1901100000 | PREPARATIONS FOR INFANT USE, PUT UP FOR RETAIL SALE |
| 1901200005 | MIXES AND DOUGHS FOR THE PREP OF COOKIES (SWEET BISCUITS), WAFFLES AND WAFERS, CONTAINING COCOA POWDER IN A PROPORTION BY WEIGHT OF LESS THAN 40 % |
| 1901200015 | MIXES AND DOUGHS FOR THE PREPARATION OF PASTRIES, CAKES AND SIMILAR SWEET BAKED PRODUCTS, INCLUDING GINGERBREAD; PUDDING, CONTAIN LT 40% COCOA POWDER |
| 1901200025 | MIXES AND DOUGHS, NESOI, NOT CONTAINING COCOA POWDER OR CONTAINING COCOA POWDER IN A PROPORTION BY WEIGHT OF LESS 40 % |
| 1901901500 | MALT EXTRACT |
| 1901902500 | PUDDINGS READY FOR IMMEDIATE CONSUMPTION WITHOUT FURTHER PREPARATION |
| 1901903020 | MALTED MILK |
| 1901903040 | ARTICLES OF MILK OR CREAM, NESOI |
| 1901909082 | CORN-SOYA MILK BLENDS |
| 1901909085 | WHEAT-FLOUR-SOYA BLENDS |
| 1901909500 | FOOD PREPARATIONS OF FLOUR, STARCH OR DAIRY, NOT CONTAINING COCOA POWDER OR CONTAINING LESS THAN 5% BY WEIGHT OF COCOA POWDER, NESOI |
| 1902112000 | PASTA, EXCLUSIVELY, CONTAINING EGGS, UNCOOKED, NOT STUFFED OR OTHERWISE PREPARED |
| 1902114000 | PASTA CONTAINING EGGS, NESOI, INCLUDING PASTA PACKAGED WITH SAUCE PREPARATIONS, UNCOOKED, NOT STUFFED OR OTHERWISE PREPARED |
| 1902192000 | PASTA, EXCLUSIVELY, WITHOUT EGG, UNCOOKED, NOT STUFFED OR OTHERWISE PREPARED |
| 1902194000 | PASTA NOT CONTAINING EGG, NESOI, INCLUDING PASTA PACKAGED WITH SAUCE PREPARATIONS, UNCOOKED, NOT STUFFED OR OTHERWISE PREPARED |
| 1902200020 | PASTA, STUFFED, CANNED |
| 1902200040 | PASTA, STUFFED, FROZEN, WHETHER OR NOT OTHERWISE PREPARED |
| 1902200060 | PASTA, STUFFED, WHETHER OR NOT COOKED OR OTHERWISE PREPARED, NESOI |
| 1902300020 | PASTA, CANNED, NESOI |
| 1902300040 | PASTA, FROZEN, NESOI |
| 1902300060 | PASTA, NESOI |
| 1902400000 | COUSCOUS, WHETHER OR NOT PREPARED |
| 1903000000 | TAPIOCA AND SUBSTITUTES THEREFOR PREPARED FROM STARCH, IN THE FORM OF FLAKES, GRAINS, PEARLS, SIFTINGS OR SIMILAR FORMS |
| 1904100040 | PREPARED FOODS OBTAINED BY THE SWELLING OR ROASTING OF CEREALS OR CEREAL PRODUCTS, CONTAINING CANE AND/OR BEET SUGAR |
| 1904100080 | PREPARED FOODS OBTAINED BY THE SWELLING OR ROASTING OF CEREALS OR CEREAL PRODUCTS, NOT CONTAINING CANE AND/OR BEET SUGAR |
| 1904200000 | PREPARED FOODS OBTAINED FROM UNROASTED CEREAL FLAKES OR FROM MIXTURES OF UNROASTED CEREAL FLAKES AND ROASTED CEREAL FLAKES OR SWELLED CEREALS |
| 1904900020 | CEREALS, OTHER THAN CORN (MAIZE) IN GRAIN FORM, PRE-COOKED OR OTHERWISE PREPARED, FROZEN |
| 1904900040 | CEREALS, OTHER THAN CORN (MAIZE) IN GRAIN FORM, PRE-COOKED OR OTHERWISE PREPARED, NESOI |
| 1905100000 | CRISP BREAD |
| 1905200000 | GINGERBREAD AND THE LIKE |
| 1905300020 | SWEET BISCUITS, WAFFLES AND WAFERS, FROZEN |
| 1905300040 | SWEET BISCUITS, WAFFLES AND WAFERS, NESOI |
| 1905400000 | RUSKS, TOASTED BREAD AND SIMILAR TOASTED PRODUCTS |
| 1905901041 | PASTRIES, CAKES, SIMILAR BAKED PRODUCTS AND PUDDINGS, WHETHER OR NOT CONTAINING CHOCOLATE, FRUIT, NUTS OR CONFECTIONERY, FROZEN |
| 1905901049 | BREAD, BISCUITS AND SIMILAR BAKED PRODUCTS, WHETHER OR NOT CONTAINING CHOCOLATE, FRUIT, NUTS OR CONFECTIONERY, FROZEN |
| 1905901050 | PASTRY, CAKES, AND SIMILAR SWEET BAKED PRODUCTS, AND PUDDINGS, WHETHER OR NOT CONTAINING CHOCOLATE, FRUIT, NUTS OR CONFECTIONERY, NESOI |
| 1905901080 | BREAD, BISCUITS AND SIMILAR BAKED PRODUCTS, WHETHER OR NOT CONTAINING CHOCOLATE, FRUIT, NUTS OR CONFECTIONERY, NESOI |
| 1905909030 | CORN CHIPS AND SIMILAR CRISP SAVORY SNACK FOODS |
| 1905909060 | PIZZA AND QUICHE |
| 1905909090 | COMMUNION WAFERS, EMPTY CAPSULES OF A KIND SUITABLE FOR PHARMACEUTICAL USE, SEALING WAFERS, RICE PAPER AND SIMILAR PRODUCTS |

Source: <http://www.census.gov/foreign-trade/schedules/b/2001/schdb.txt>

Macaroni and noodles are already considered in the export data to estimate wheat flour supply and utilization (see p.121 food consumption prices and expenditures, 1970-97).

Table 2. Import Codes, Chapter 19: Preparations of Cereals, Flour, Starch or Milk; Bakers' Wares (Harmonized Tariff Schedule of the United States—2002)

| Import Code | Description |
|-------------|---|
| 1901100500 | Food preps, infant use, retail, > 10% milk solids, gen note 15 |
| 1901101500 | Infant formula containing oligosaccharides, additional us note 2 - chap 19 |
| 1901103000 | Infant formula containing oligosaccharides, other |
| 1901103500 | Food preps, infant, retail sale, >10% milk solids, add note 10-ch4 |
| 1901104000 | Food preps, infant, retail, >10% milk solids, addtl note 1-ch4 |
| 1901104500 | Food preps, infant retail, >10% milk solids, nesoi |
| 1901105500 | Food preps, infant retail, |
| 1901106000 | Infant formulas, retail, |
| 1901107500 | Infant formulas, retail, |
| 1901108000 | Food preps, infant, retail, |
| 1901108500 | Food preps, infant, retail, |
| 1901109500 | Preps for infant use, for retail sale, nesoi |
| 1901200200 | Bakers mixes/doughs of 1905, >25% butterfat, not retail, gen note 15 |
| 1901200500 | Bakers mixes/doughs of 1905, >25% butterfat, not retail, addtl note 10-ch4 |
| 1901201500 | Bakers mixes/doughs of 1905, not retail, >25% butterfat, oq |
| 1901202000 | 1/ Bakers mixes/doughs of 1905, not retail, >25% butterfat, su, qt |
| 1901202500 | Bakers mixes/doughs of 1905, not retail, >25% butterfat, su, oq |
| 1901203000 | Bakers mixes/dough of 1905, >25% butterfat, not retail, addtl note 3 |
| 1901203500 | Bakers mixes/dough of 1905, >25% butterfat, not retail, addtl note 1-ch19 |
| 1901204000 | Bakers mixes/dough of 1905, >25% butterfat, not retail, nesoi |
| 1901204200 | Bakers mixes/dough of 1905, nesoi, gen note 15, dry |
| 1901204500 | Bakers mixes/dough of 1905, dairy of addtl note 1 - ch4, addtl note 10 - ch4 |
| 1901205000 | Bakers mixes/dough of 1905, dairy of addtl note 1 - ch4, other |
| 1901205500 | 1/ Bakers mixes/dough of 1905, >65% sugar in addtl note 2 - ch17, addtl note 7 - ch17 |
| 1901206000 | Bakers mixes/dough of 1905, >65% sugar in addtl note 2 - ch17, other |
| 1901206500 | Mixes/dough of 1905 nesoi dry form, addtl note 1 - ch19, addtl note 3 |

Table 2. Continued

| Import Code | Description |
|-------------|---|
| 1901207000 | Mixes/dough of 1905, addtl note 1 to chap 19, nesoi |
| 1901208000 | Mixes/dough for prep of bakers wares of 1905 nesoi |
| 1901901000 | Malt extract, fluid |
| 1901902000 | Malt extract, solid or condensed |
| 1901902500 | Puddings ready to eat without further preparation |
| 1901902800 | Dry mixtures, 17.5% sodium caseinate, butterfat, whey, >5.5% butterfat and dried whole milk.... |
| 1901903200 | Cajeta not made from cows milk |
| 1901903300 | Margarine cheese, general note 15 |
| 1901903400 | Margarine cheese, additional us note 23 - chapter 4 |
| 1901903600 | Margarine cheese, nesoi |
| 1901903800 | Dairy preps, addtl note 1 - ch 4, >10% milk solids, general note 15 |
| 1901904200 | Dairy preps, >10% milk solids, addtl note 10-ch4 |
| 1901904300 | Malted milk containing > 10 % milk solids, nesoi |
| 1901904400 | Dairy products addtl note 1-ch4, general note 15 |
| 1901904600 | Dairy products addtl note 1-ch4, addtl note 10-ch4 |
| 1901904700 | Dairy products addtl note 1-ch4, nesoi |
| 1901904800 | Food preps of flour, meal, starch or malt extract, nesoi, described in general note 15 |
| 1901905200 | Food preps of flour, meal, starch or malt extract, nesoi, >65% sugar addtl note 2-ch17, addtl note 7-ch17 |
| 1901905400 | Food preps of flour, meal, starch or malt extract, nesoi, >65% sugar addtl note 2-ch17, other |
| 1901905600 | Articles of milk or cream, nesoi, addtl note 8-ch17 |
| 1901905800 | Food preps of flour, meal, starch or malt extract, nesoi, >10% sugar addtl note 3-ch17, other |
| 1901907000 | Food preps of flour, meal, starch or malt extract, nesoi, >5.5% butterfat, not retail |
| 1901909082 | Food preps, nesoi, corn-soya milk blends |
| 1901909085 | Food preps, nesoi, wheat-flour-soya blends |
| 1901909095 | Food preparations of flour/starch/dairy etc, nesoi |
| 1902112000 | 2/ Pasta with egg uncooked not stuffed or othrwse pre |
| 1902112010 | Pasta, uncooked, not stuffed, containing eggs, product of a european union country, subject to the inward processing regime (ipr) |

Table 2. Continued

| Import Code | Description |
|---------------|---|
| 1902112020 | Pasta, uncooked, not stuffed, containing eggs, product of a european union country, subject to the eu reduced export refund |
| 1902112030 | Pasta, uncooked, not stuffed, containing eggs, other, product of a european union country |
| 1902112090 | Pasta, uncooked, not stuffed, containing eggs, product of a country other than a european union country |
| 1902114000 | Pasta with egg nesoi sauce not stuffed or othrwise prep |
| 1902192000 2/ | Pasta no egg uncooked not stuffed or othrwise prep |
| 1902192010 | Pasta, uncooked, not stuffed, no eggs, product of a european union country, subject to the inward processing regime |
| 1902192020 | Pasta, uncooked, not stuffed, no eggs, product of a european union country subject to the reduced export refund |
| 1902192030 | Pasta, uncooked, not stuffed, no eggs, other, product of a european union country |
| 1902192090 | Pasta, uncooked, not stuffed, no eggs, product of a country other than a european union country |
| 1902194000 | Pasta no egg nesoi incl sauce nt stuff/othrws prep |
| 1902200020 | Pasta, stuffed, canned |
| 1902200040 | Pasta stuffed, frozen, whether otherwise prepared |
| 1902200060 | Pasta stuffed whether cooked/otherwise prep, nesoi |
| 1902300020 | Pasta, canned, nesoi |
| 1902300040 | Pasta, frozen, nesoi |
| 1902300060 | Pasta, nesoi |
| 1902400000 | Couscous, whether or not prepared |
| 1903002000 | Tapioca/substitutes, arrowroot/cassava/sago starch |
| 1903004000 | Tapioca and substitutes prepared from starch nesoi |
| 1904100040 | Prep food swelling/roasting cereal product w/sugar |
| 1904100080 | Prep food, swelling/roasting cereal prod w/o sugar |
| 1904201000 | Prep foods from unroasted cereal flakes, airtight containers, no apricots, citrus fruit, peaches, or pears |
| 1904209000 | Prep foods from unroasted cereal flakes, nesoi |
| 1904300000 1/ | Bulgur wheat, pre-cooked or otherwise prepared |
| 1904900020 2/ | Cereal not corn grain form precook/othrws prep frz |
| 1904900040 2/ | Cereal nt corn grain form precook/othrws prep nesoi |
| 1904900120 1/ | Cereals, other than corn (maize) in grain form, pre-cooked or otherwise prepared, frozen, nesoi |
| 1904900140 1/ | Cereals, other than corn (maize) in grain form, pre-cooked or otherwise prepared, nesoi |

Table 2. Continued

| Import Code | Description |
|-------------|---|
| 1905100000 | Crispbread |
| 1905200000 | 2/ Gingerbread and the like |
| 1905300020 | 2/ Sweet biscuits, waffles and wafers, frozen |
| 1905300021 | 2/ Sweet biscuits, waffles, wafers, frozen, containing peanuts or peanut products |
| 1905300029 | 2/ Sweet biscuits, waffles, wafers, frozen, not containing peanuts or peanut products |
| 1905300040 | 2/ Sweet biscuits, waffles and wafers, nesoi |
| 1905300041 | 2/ Sweet biscuits, waffles, wafers, not frozen, containing peanuts or peanut products |
| 1905300049 | 2/ Sweet biscuits, waffles, wafers, not frozen, other |
| 1905310021 | 1/ Sweet biscuits, frozen, containing peanuts or peanut products |
| 1905310029 | 1/ Sweet biscuits, frozen, nesoi |
| 1905310041 | 1/ Sweet biscuits, other than frozen, containing peanuts or peanut products |
| 1905310049 | 1/ Sweet biscuits, other than frozen, nesoi |
| 1905320021 | 1/ Waffles and wafers, frozen, containing peanuts or peanut products |
| 1905320029 | 1/ Waffles and wafers, frozen, nesoi |
| 1905320041 | 1/ Waffles and wafers, other than frozen, containing peanuts or peanut products |
| 1905320049 | 1/ Waffles and wafers, other than frozen, nesoi |
| 1905400000 | Rusks, toasted bread and similar products |
| 1905901041 | Pastry/cake/sweet baked products, puddings, frozen |
| 1905901049 | Bread/biscuits/other baked products, frozen |
| 1905901050 | Pastry/cakes/puddings w/nt cont choc/fruit/nut etc |
| 1905901070 | Bread, nesoi |
| 1905901090 | Biscuits/other similar baked products, nesoi |
| 1905909030 | Corn chips and similar crisp savory snack foods |
| 1905909060 | Pizza and quiche |
| 1905909090 | Communion/sealing wafer rice ppr empty capsule etc |

Source: USDA. Foreign Agricultural Service (<http://www.fas.usda.gov/ustrade/ustlists/ImCmnty.asp?OI=&type=1&code=19>). Based on Chapter 19 : Preparations of Cereals, Flour, Starch or Milk; Bakers' Wares (Harmonized Tariff Schedule of the United States—2002-- <http://dataweb.usitc.gov/SCRIPTS/tariff/0203c19.pdf>)

1/ New code in the 2002 Harmonized Tariff Schedule of the United States. Therefore there is not annual data at this time (6/12/02)

2/Does not appear in the 2002 Harmonized Tariff Schedule of the United States, but it appears in the previous years included in this study

Table 3. Export Codes, Chapter 19: Preparations of Cereals, Flour, Starch or Milk; Bakers' Wares (Schedule B Codes-2001)

| Export Code | Description |
|--|--|
| Group 1: 1901.20: mixes and doughs for the preparation of bakers ' wares of heading 1905 | |
| 1901200005 | Mixes and doughs for the prep of cookies (sweet biscuits), waffles and wafers, containing cocoa powder in a proportion by weight of less than 40 % |
| 1901200015 | Mixes and doughs for the preparation of pastries, cakes and similar sweet baked products, including gingerbread; pudding, contain less than 40% cocoa powder |
| 1901200025 | Mixes and doughs, nesoi, not containing cocoa powder or containing cocoa powder in a proportion by weight of less 40 % |

Source: <http://www.census.gov/foreign-trade/schedules/b/2002/schdb.txt>

Table 3. Continued

| Export Code | Description |
|-------------|--|
| | Group 2: 1902: pasta, whether or not cooked or stuffed [with meat or other substances] or otherwise prepared); couscous |
| | Uncooked pasta, not stuffed or otherwise prepared |
| 1902112000 | Pasta, exclusively, containing eggs, uncooked, not stuffed or otherwise prepared |
| 1902114000 | Pasta containing eggs, nesoi, including pasta packaged with sauce preparations, uncooked, not stuffed or otherwise prepared |
| 1902192000 | Pasta, exclusively, without egg, uncooked, not stuffed or otherwise prepared |
| 1902194000 | Pasta not containing egg, nesoi, including pasta packaged with sauce preparations, uncooked, not stuffed or otherwise prepared |

Source: <http://www.census.gov/foreign-trade/schedules/b/2002/schdb.txt>

Table 3. Continued

| Export Code | Description |
|-------------|--|
| | Stuffed pasta, whether or not cooked or otherwise prepared (canned or frozen); other pasta (pasta nesoi); couscous |
| 1902200020 | Pasta, stuffed, canned |
| 1902200040 | Pasta, stuffed, frozen, whether or not otherwise prepared |
| 1902200060 | Pasta, stuffed, whether or not cooked or otherwise prepared, nesoi |
| 1902300020 | Pasta, canned, nesoi |
| 1902300040 | Pasta, frozen, nesoi |
| 1902300060 | Pasta, nesoi |
| | Couscous, whether or not prepared |
| 1902400000 | Couscous, whether or not prepared |

1/ Source: <http://www.census.gov/foreign-trade/schedules/b/2002/schdb.txt>

Table 3. Continued

| Export Code | Description |
|-------------|---|
| | Group 3: 1904: prepared foods obtained by the swelling of roasting of cereals or cereal products [for example cornflakes]; cereals [other than corn] in grain form or in the form of flakes or other worked grains [except flour and meal], pre-cooked or otherwise prepared, not elsewhere specified or included |
| 1904100040 | Prepared foods obtained by the swelling or roasting of cereals or cereal products, containing cane and/or beet sugar |
| 1904100080 | Prepared foods obtained by the swelling or roasting of cereals or cereal products, not containing cane and/or beet sugar |
| 1904200000 | Prepared foods obtained from unroasted cereal flakes or from mixtures of unroasted cereal flakes and roasted cereal flakes or swelled cereals |
| 1904900020 | Cereals, other than corn (maize) in grain form, pre-cooked or otherwise prepared, frozen |
| 1904900040 | Cereals, other than corn (maize) in grain form, pre-cooked or otherwise prepared, nesoi |

1/ Source: <http://www.census.gov/foreign-trade/schedules/b/2002/schdb.txt>

Note: The new schedule B, 2002 no longer includes codes 1904900020 and 1904900040. Three new codes have been included:

1904300000 (bulgur wheat, pre-cooked or otherwise prepared), 1904900120 (cereals, other than corn (maize), nesoi, pre-cooked or otherwise prepared, frozen), and 1904900140 (cereals, other than corn (maize), nesoi, pre-cooked or otherwise prepared, not frozen). However no data is available at this time (5-9-02) for these export codes.

Exp.codes 1904100045 (Swelling/roasting cereal/cereal prod. Cont. sugar) and 1904100085 (Swelling/roasting cereal/cereal prod. NO Cont. sugar) appeared only in 1996. So we will use 1904100040 and 1904100080 to represent these codes in that year.

Table 3. Continued

| Export Code | Description |
|-------------|---|
| | Group 4: 1905: bread, pastry, cakes, biscuits and other bakers' wares, whether or not containing cocoa |
| 1905100000 | Crispbread |
| 1905200000 | Gingerbread and the like |
| 1905300020 | Sweet biscuits, waffles and wafers, frozen |
| 1905300040 | Sweet biscuits, waffles and wafers, nesoi |
| 1905400000 | Rusks, toasted bread and similar toasted products |
| 1905901041 | Pastries, cakes, similar baked products and puddings, whether or not containing chocolate, fruit, nuts or confectionery, frozen |
| 1905901049 | Bread, biscuits and similar baked products, whether or not containing chocolate, fruit, nuts or confectionery, frozen |
| 1905901050 | Pastry, cakes, and similar sweet baked products, and puddings, whether or not containing chocolate, fruit, nuts or confectionery, nesoi |
| 1905901080 | Bread, biscuits and similar baked products, whether or not containing chocolate, fruit, nuts or confectionery, nesoi |
| 1905909030 | Corn chips and similar crisp savory snack foods |
| 1905909060 | Pizza and quiche |

1/ Source: <http://www.census.gov/foreign-trade/schedules/b/2002/schdb.txt>

Note: Note: The new schedule B, 2002 no longer includes codes 1905300020 (Sweet biscuits, waffles and wafers, frozen) and 1905300040 (Sweet biscuits, waffles and wafers, nesoi). Two new codes have been included: 1905310000 (cookies (sweet biscuits)) and 1905320000 (waffles and wafers). However no data is available at this time (5-9-02) for these export codes.

Table 3. Continued

| Export Code | Description |
|----------------------------------|--|
| Group 5: Unassigned export codes | |
| 1901100000 | Preparations for infant use, put up for retail sale |
| 1901901500 | Malt extract |
| 1901902500 | Puddings ready for immediate consumption without further preparation |
| 1901903020 | Malted milk |
| 1901903040 | Articles of milk or cream, nesoi |
| 1901909082 | Corn-soya milk blends |
| 1901909085 | Wheat-flour-soya blends |
| 1901909500 | Food preparations of flour, starch or dairy, not containing cocoa powder or containing less than 5% by weight of cocoa powder, nesoi |
| 1903000000 | Tapioca and substitutes therefore prepared from starch, in the form of flakes, grains, pearls, siftings or similar forms |
| 1905909090 | Communion wafers, empty capsules of a kind suitable for pharmaceutical use, sealing wafers, rice paper and similar product |

1/ Source: <http://www.census.gov/foreign-trade/schedules/b/2002/schdb.txt>

Table 4. Import Codes, Chapter 19: Preparations of Cereals, Flour, Starch or Milk; Bakers' Wares (Harmonized Tariff Schedule of the United States—2002)—Five Groups

| Import Code | Description |
|-------------|--|
| | Group 1:1901.20: Mixes and Doughs for the Preparation of Bakers' Wares of Heading 1905 |
| 1901200200 | Bakers mixes/doughs of 1905, >25% butterfat, not retail, gen note 15 |
| 1901200500 | Bakers mixes/doughs of 1905, >25% butterfat, not retail, addtl note 10-ch4 |
| 1901201500 | Bakers mixes/doughs of 1905, not retail, >25% butterfat, oq |
| 1901202000 | 1/ Bakers mixes/doughs of 1905, not retail, >25% butterfat, su, qt |
| 1901202500 | Bakers mixes/doughs of 1905, not retail, >25% butterfat, su, oq |
| 1901203000 | Bakers mixes/dough of 1905, >25% butterfat, not retail, addtl note3 |
| 1901203500 | Bakers mixes/dough of 1905, >25% butterfat, not retail, addtl note 1-ch19 |
| 1901204000 | Bakers mixes/dough of 1905, >25% butterfat, not retail, nesoi |
| 1901204200 | Bakers mixes/dough of 1905, nesoi, gen note 15, dry |
| 1901204500 | Bakers mixes/dough of 1905, dairy of addtl note 1 - ch4, addtl note 10 - ch4 |
| 1901205000 | Bakers mixes/dough of 1905, dairy of addtl note 1 - ch4, other |
| 1901205500 | 1/ Bakers mixes/dough of 1905, >65% sugar in addtl note 2 - ch17, addtl note 7 - ch17 |
| 1901206000 | Bakers mixes/dough of 1905, >65% sugar in addtl note 2 - ch17, other |
| 1901206500 | Mixes/dough of 1905 nesoi dry form, addtl note 1 - ch19, addtl note 3 |
| 1901207000 | Mixes/dough of 1905, addtl note 1 to chap 19, nesoi |
| 1901208000 | Mixes/dough for prep of bakers wares of 1905 nesoi |

Table 4. Continued

| Import Code | Description |
|---------------|---|
| | Group 2: 1902: Pasta, whether or not cooked or stuffed (with meat or other substances) or otherwise prepared; couscous |
| | Uncooked pasta, not stuffed or otherwise prepared |
| 1902112000 2/ | Pasta with egg uncooked not stuffed or otherwise prep |
| 1902112010 | Pasta, uncooked, not stuffed, containing eggs, product of a european union country, subject to the inward processing regime (ipr) |
| 1902112020 | Pasta, uncooked, not stuffed, containing eggs, product of a european union country, subject to the eu reduced export refund |
| 1902112030 | Pasta, uncooked, not stuffed, containing eggs, other, product of a european union country |
| 1902112090 | Pasta, uncooked, not stuffed, containing eggs, product of a country other than a european union country |
| 1902114000 | Pasta with egg nesoi sauce not stuffed or othrwise prep |
| 1902192000 2/ | Pasta no egg uncooked not stuffed or othrwise prep |
| 1902192010 | Pasta, uncooked, not stuffed, no eggs, product of a european union country, subject to the inward processing regime |
| 1902192020 | Pasta, uncooked, not stuffed, no eggs, product of a european union country subject to the reduced export refund |
| 1902192030 | Pasta, uncooked, not stuffed, no eggs, other, product of a european union country |
| 1902192090 | Pasta, uncooked, not stuffed, no eggs, product of a country other than a european union country |
| 1902194000 | Pasta no egg nesoi incl sauce nt stuff/othrws prep |

Table 4. Continued

| Import Code | Description |
|-------------|--|
| | Stuffed pasta, whether or not cooked or otherwise prepared (canned or frozen); other pasta (pasta nesoi); couscous |
| 1902200020 | Pasta, stuffed, canned |
| 1902200040 | Pasta stuffed, frozen, whether otherwise prepared |
| 1902200060 | Pasta stuffed whether cooked/otherwise prep, nesoi |
| 1902300020 | Pasta, canned, nesoi |
| 1902300040 | Pasta, frozen, nesoi |
| 1902300060 | Pasta, nesoi |
| | Couscous |
| 1902400000 | Couscous, whether or not prepared |

Table 4. Continued

| Import Code | Description |
|-------------|--|
| | Group 3: 1904: Prepared foods obtained by the swelling or roasting of cereals or cereal products [for example, cornflakes]; cereals [other than corn] in the grain form or in the form of flakes or other worked grains [except flour, groats, and meal], pre-cooked or otherwise prepared, not elsewhere specified or included) |
| 1904100040 | Prep food swelling/roasting cereal product w/sugar |
| 1904100080 | Prep food, swelling/roasting cereal prod w/o sugar |
| 1904201000 | Prep foods from unroasted cereal flakes, airtight containers, no apricots, citrus fruit, peaches, or pears |
| 1904209000 | Prep foods from unroasted cereal flakes, nesoi |
| 1904300000 | 1/ Bulgur wheat, pre-cooked or otherwise prepared |
| 1904900020 | 2/ Cereal not corn grain form precook/othrws prep frz |
| 1904900040 | 2/ Cereal not corn grain form precook/othws prep nesoi |
| 1904900120 | 1/ Cereals, other than corn (maize) in grain form, pre-cooked or otherwise prepared, frozen, nesoi |
| 1904900140 | 1/ Cereals, other than corn (maize) in grain form, pre-cooked or otherwise prepared, nesoi |

Table 4 Continued

| Import Code | Description |
|-------------|---|
| | Group 4: 1905: Bread, pastry, cakes, biscuits, and other bakers' wares, whether or not containing cocoa |
| 1905100000 | Crispbread |
| 1905200000 | Gingerbread and the like |
| 1905300020 | 2/ Sweet biscuits, waffles and wafers, frozen |
| 1905300021 | 2/ Sweet biscuits, waffles, wafers, frozen, containing peanuts or peanut products |
| 1905300029 | 2/ Sweet biscuits, waffles, wafers, frozen, not containing peanuts or peanut products |
| 1905300040 | 2/ Sweet biscuits, waffles and wafers, nesoi |
| 1905300041 | 2/ Sweet biscuits, waffles, wafers, not frozen, containing peanuts or peanut products |
| 1905300049 | 2/ Sweet biscuits, waffles, wafers, not frozen, other |
| 1905310021 | 1/ Sweet biscuits, frozen, containing peanuts or peanut products |
| 1905310029 | 1/ Sweet biscuits, frozen, nesoi |
| 1905310041 | 1/ Sweet biscuits, other than frozen, containing peanuts or peanut products |
| 1905310049 | 1/ Sweet biscuits, other than frozen, nesoi |
| 1905320021 | 1/ Waffles and wafers, frozen, containing peanuts or peanut products |
| 1905320029 | 1/ Waffles and wafers, frozen, nesoi |
| 1905320041 | 1/ Waffles and wafers, other than frozen, containing peanuts or peanut products |
| 1905320049 | 1/ Waffles and wafers, other than frozen, nesoi |

Table 4. Continued

| Import Code | Description |
|-------------|--|
| 1905400000 | Rusks, toasted bread and similar products |
| 1905901041 | Pastry/cake/sweet baked products, puddings, frozen |
| 1905901049 | Bread/biscuits/other baked products, frozen |
| 1905901050 | Pastry/cakes/puddings w/nt cont choc/fruit/nut etc |
| 1905901070 | Bread, nesoi |
| 1905901090 | Biscuits/other similar baked products, nesoi |
| 1905909030 | Corn chips and similar crisp savory snack foods |
| 1905909060 | Pizza and quiche |

Table 4. Continued

| Import Code | Description |
|-------------|---|
| | Group 5: Unassigned Imports Codes |
| 1901100500 | Food preps, infant use, retail, > 10% milk solids, gen note 15 |
| 1901101500 | Infant formula containing oligosaccharides, additional us note 2 - chap 19 |
| 1901103000 | Infant formula containing oligosaccharides, other |
| 1901103500 | Food preps, infant, retail sale,>10% milk solids, add note10-ch4 |
| 1901104000 | Food preps, infant, retail, >10% milk solids, addtl note 1-ch4 |
| 1901104500 | Food preps, infant retail, >10% milk solids, nesoi |
| 1901105500 | Food preps, infant retail, |
| 1901106000 | Infant formulas, retail, |
| 1901107500 | Infant formulas, retail, |
| 1901108000 | Food preps, infant, retail, |
| 1901108500 | Food preps, infant, retail, |
| 1901109500 | Preps for infant use, for retail sale, nesoi |
| 1901901000 | Malt extract, fluid |
| 1901902000 | Malt extract, solid or condensed |
| 1901902500 | Puddings ready to eat without further preparation |
| 1901902800 | Dry mixtures, 17.5% sodium caseinate, butterfat,whey, >5.5% butterfat and dried whole milk... |
| 1901903200 | Cajeta not made from cows milk |
| 1901903300 | Margarine cheese, general note 15 |

Table 4. Continued

| Import Code | Description |
|-------------|---|
| 1901903400 | Margarine cheese, additional us note 23 - chapter 4 |
| 1901903600 | Margarine cheese, nesoi |
| 1901903800 | Dairy preps, addtl note 1 - ch 4, >10% milk solids, general note 15 |
| 1901904200 | Dairy preps, >10% milk solids, addtl note 10-ch4 |
| 1901904300 | Malted milk containing > 10 % milk solids, nesoi |
| 1901904400 | Dairy products addtl note 1-ch4, general note 15 |
| 1901904600 | Dairy products addtl note 1-ch4, addtl note 10-ch4 |
| 1901904700 | Dairy products addtl note 1-ch4, nesoi |
| 1901904800 | Food preps of flour, meal, starch or malt extract, nesoi, described in general note 15 |
| 1901905200 | Food preps of flour, meal, starch or malt extract, nesoi, >65% sugar addtl note 2-ch17, addtl note 7-ch17 |
| 1901905400 | Food preps of flour, meal, starch or malt extract, nesoi, >65% sugar addtl note 2-ch17, other |
| 1901905600 | Articles of milk or cream, nesoi, addtl note 8-ch17 |
| 1901905800 | Food preps of flour, meal, starch or malt extract, nesoi, >10% sugar addtl note 3-ch17, other |
| 1901907000 | Food preps of flour, meal, starch or malt extract, nesoi, >5.5% butterfat, not retail |
| 1901909082 | Food preps , nesoi, corn-soya milk blends |
| 1901909085 | Food preps, nesoi, wheat-flour-soya blends |
| 1901909095 | Food preparations of flour/starch/dairy etc, nesoi |
| 1903002000 | Tapioca/substitutes, arrowroot/cassava/sago starch |
| 1903004000 | Tapioca and substitutes prepared from starch nesoi |
| 1905909090 | Communion/sealing wafer rice ppr empty capsule etc |

Source: USDA. Foreign Agricultural Service (<http://www.fas.usda.gov/ustrade/ustlists/ImCmnty.asp?QI=&type=1&code=19>). Based on Chapter 19 : Preparations of Cereals, Flour, Starch or Milk; Bakers' Wares (Harmonized Tariff Schedule of the United States—2002-- <http://dataweb.usitc.gov/SCRIPTS/tariff/0203c19.pdf>)

1/ New code in the 2002 Harmonized Tariff Schedule of the United States. Therefore there is not annual data at this time (6/12/02)

2/Does not appear in the 2002 Harmonized Tariff Schedule of the United States, but it appears in the previous years included in this study

Table 5. Comparing Current Estimates vs. New Estimates of Wheat Flour Exports (as Products)

| | Unit | 1995 | 1996 | 1997 | 1998 | 1999 | 2000 | 2001 |
|--|-------------------|---------------|---------------|---------------|---------------|---------------|---------------|-----------|
| Current wheat flour exports (wheat flour supply and utilization table) estimates (Includes only uncooked macaroni and noodle products) | 1000 hundreweight | 702.00 | 707.00 | 1,015.00 | 1,215.00 | 1,610.00 | 1,685.00 | NA |
| New estimates wheat flour exported from Groups 2 (Includes only uncooked pasta) | 1000 hundreweight | 671.00 | 677.50 | 985.18 | 1,175.01 | 1,388.30 | 1,357.88 | 1,403.13 |
| Change in wheat flour exports for uncooked pasta products | 1000 hundreweight | -31.00 | -29.50 | -29.82 | -39.99 | -221.70 | -327.12 | NA |
| Percentage change | % | -4.42 | -4.17 | -2.94 | -3.29 | -13.77 | -19.41 | NA |
| Current wheat flour exports (wheat flour supply and utilization table) estimates (Includes only macaroni and noodle products) | 1000 hundreweight | 702.00 | 707.00 | 1,015.00 | 1,215.00 | 1,610.00 | 1,685.00 | NA |
| New estimates (wheat flour exported from Groups 1, 2, 3, and 4) | 1000 hundreweight | 4,541.49 | 5,024.38 | 5,627.19 | 5,761.81 | 6,077.62 | 6,233.33 | 6,541.07 |
| Change in wheat flour exports for products | 1000 hundreweight | 3,839.49 | 4,317.38 | 4,612.19 | 4,546.81 | 4,467.62 | 4,548.33 | NA |
| Percentage change | % | 546.94 | 610.66 | 454.40 | 374.22 | 277.49 | 269.93 | NA |

Data sources

Export data: USDA/Foreign Agricultural Service (www.fas.usda.gov/ustrade). Originally compiled by Department of Commerce, U.S. Census Bureau, Foreign Trade Statistics

Current wheat flour exports (Supply and Utilization table) Estimates: ERS/USDA (internet: www.ers.usda.gov/Data/FoodConsumption/spreadsheets.asp)

New Estimates: Food Commodity Intake Database (FCID); Technical Support Files (TSF) from Continuing Survey of Food Intakes by Individuals (CSFII 1994-96,1998).

Table 6. Comparing Current vs. New Estimates of Wheat Flour Exports (as Wheat Flour and Products)

| | Unit | 1995 | 1996 | 1997 | 1998 | 1999 | 2000 | 2001 |
|--|----------------------|--------------|--------------|--------------|--------------|--------------|--------------|-----------|
| Current wheat flour exports (wheat flour supply and utilization table) estimates | | | | | | | | |
| Wheat flour exports 1/ | 1000 hundreweight | 23,770.00 | 10,825.00 | 11,190.00 | 12,551.00 | 17,568.00 | 16,053.00 | NA |
| Current estimates wheat flour exports from products (Includes only macaroni and noodle products) 1/ | 1000 hundreweight | 702.00 | 707.00 | 1,015.00 | 1,215.00 | 1,610.00 | 1,685.00 | NA |
| Total current wheat flour exports (wheat flour+ wheat flour as products [includes only macaroni and noodle products]) | 1000 hundreweight | 24,472.00 | 11,532.00 | 12,205.00 | 13,766.00 | 19,178.00 | 17,738.00 | NA |
| New estimates wheat flour exports (includes wheat flour exported from Groups 1, 2, 3, and 4) | | | | | | | | |
| Wheat flour exports 1/ | 1000 hundreweight | 23,770.00 | 10,825.00 | 11,190.00 | 12,551.00 | 17,568.00 | 16,053.00 | NA |
| New estimates (wheat flour exported from Groups 1, 2, 3, and 4) 2/ | 1000 hundreweight | 4,541.49 | 5,024.38 | 5,627.19 | 5,761.81 | 6,077.62 | 6,233.33 | 6,541.07 |
| Total new wheat flour exports (wheat flour + wheat flour as products [includes Group 1, 2, 3, and 4]) | 1000 hundreweight | 28,311.49 | 15,849.38 | 16,817.19 | 18,312.81 | 23,645.62 | 22,286.33 | 6,541.07 |
| Change in wheat flour exports | 1000 hundreweight | 3,839.49 | 4,317.38 | 4,612.19 | 4,546.81 | 4,467.62 | 4,548.33 | NA |
| Percentage change | % | 15.69 | 37.44 | 37.79 | 33.03 | 23.30 | 25.64 | NA |

Export data: USDA/Foreign Agricultural Service (www.fas.usda.gov/ustrade). Originally compiled by Department of Commerce, U.S. Census Bureau, Foreign Trade Statistics

1/ Wheat flour exports and Current wheat flour exports from products (Supply and Utilization table) Estimates: ERS/USDA (internet: www.ers.usda.gov/Data/FoodConsumption/spreadsheets.asp).

2/ New Estimates: Food Commodity Intake Database (FCID); Technical Support Files (TSF) from Continuing Survey of Food Intakes by Individuals (CSFII 1994-96,1998).

Table 7. Comparing Current Estimates Vs. New Estimates of Wheat Flour Imports (as Products)

| | UNIT | 1995 | 1996 | 1997 | 1998 | 1999 | 2000 | 2001 |
|--|--------------------|--------------|--------------|--------------|--------------|--------------|---------------|-----------|
| Current wheat flour imports (Wheat Flour Supply and Utilization Table) estimates (includes only uncooked macaroni and noodle products) 1/ | 1000 hundredweight | 5,566.96 | 5,651.21 | 6,259.56 | 6,787.68 | 6,271.46 | 6,289.40 | NA |
| New estimates wheat flour imported from Group 2 (includes only uncooked pasta) | 1000 hundredweight | 5,509.58 | 5,583.59 | 6,195.77 | 6,725.47 | 6,171.76 | 6,195.98 | 6,213.95 |
| Change in wheat flour imports for uncooked pasta products | 1000 hundredweight | -57.38 | -67.62 | -63.80 | -62.21 | -99.70 | -93.42 | NA |
| Percent change | % | -1.03 | -1.20 | -1.02 | -0.92 | -1.59 | -1.49 | NA |
| Current wheat flour imports (Wheat Flour Supply and Utilization Table) estimates (includes only uncooked macaroni and noodle products) | 1000 hundredweight | 5,566.96 | 5,651.21 | 6,259.56 | 6,787.68 | 6,271.46 | 6,289.40 | NA |
| New estimates (wheat flour from Groups 1, 2, 3, and 4) | 1000 hundredweight | 8,853.14 | 9,545.84 | 10,711.52 | 11,946.40 | 12,271.44 | 12,791.08 | 13,526.84 |
| Change in wheat flour imports for uncooked pasta products | 1000 hundredweight | 3,286.18 | 3,894.63 | 4,451.95 | 5,158.73 | 5,999.99 | 6,501.68 | NA |
| Percent change | % | 59.03 | 68.92 | 71.12 | 76.00 | 95.67 | 103.38 | NA |

Source

Current wheat flour import (Supply and Utilization table) estimates: ERS/USDA (internet: www.ers.usda.gov/Data/FoodConsumption/spreadsheets.asp).

1/ The current supply and utilization table (ERS/USDA (internet: www.ers.usda.gov/Data/FoodConsumption/spreadsheets.asp), show in one column both imports of wheat flour and products (macaroni and noodles). In order to estimate the wheat flour imports (as products), we first estimated the amount of wheat flour imports as flour (import codes included: hard spring wheat flour (1101000010), durum wheat flour (1101000020), white winter wheat flour (1101000030), Wheat or meslin flour, nesoi (1101000090), groats and meal of wheat, semolina (1103110020), and groats and meal of wheat, nesoi (1103110040). Then we estimated the wheat flour import (as product--macaroni and noodles) by subtracting wheat flour import as flour from Total Wheat Flour Imports(as reported in the Wheat Flour S&U Table). Import code 1101000000 (wheat flour) was not included in this analysis because there were not data for the analyzed period (see file US_IMP_whflour_monthly_calendar_year.xls).

Table 8. Comparing Current vs. New Estimates of Wheat Flour Imports (as Wheat Flour and Products)

| | UNIT | 1995 | 1996 | 1997 | 1998 | 1999 | 2000 | 2001 |
|---|------------------------|--------------|--------------|--------------|--------------|--------------|--------------|-----------|
| Current wheat flour imports (wheat flour supply and utilization table) estimates | | | | | | | | |
| Wheat flour | 1000 cwt hundredweight | 3,351.04 | 2,922.79 | 2,424.44 | 2,957.32 | 3,033.54 | 3,373.60 | 3,834.63 |
| Current estimates wheat flour imports (as products-- includes only macaroni and noodles) | 1000 hundredweight | 5,566.96 | 5,651.21 | 6,259.56 | 6,787.68 | 6,271.46 | 6,289.40 | NA |
| Total current wheat flour imports (wheat flour + wheat flour as products [includes only macaroni and noodles]) | 1000 hundredweight | 8,918.00 | 8,574.00 | 8,684.00 | 9,745.00 | 9,305.00 | 9,663.00 | NA |
| New Estimates wheat flour imports (includes wheat flour imported from Groups 1, 2, 3, and 4) | | | | | | | | |
| Wheat Flour Imports (as flour) 2/ | 1000 hundredweight | 3,351.04 | 2,922.79 | 2,424.44 | 2,957.32 | 3,033.54 | 3,373.60 | 3,834.63 |
| New estimates (wheat flour imported (as products) from Groups 1, 2, 3, and 4) | 1000 hundredweight | 8,853.14 | 9,545.84 | 10,711.52 | 11,946.40 | 12,271.44 | 12,791.08 | 13,526.84 |
| Total new wheat flour imports (wheat flour + wheat flour as products (Groups 1, 2, 3, and 4)) | 1000 hundredweight | 12,204.18 | 12,468.63 | 13,135.95 | 14,903.73 | 15,304.99 | 16,164.68 | 17,361.46 |
| Change in wheat flour imports | 1000 hundredweight | 3,286.18 | 3,894.63 | 4,451.95 | 5,158.73 | 5,999.99 | 6,501.68 | NA |
| Percent Change | % | 36.85 | 45.42 | 51.27 | 52.94 | 64.48 | 67.28 | NA |

Source

Current wheat flour import (Supply and Utilization table) estimates: ERS/USDA (internet: www.ers.usda.gov/Data/FoodConsumption/spreadsheets.asp).

1/ The current supply and utilization table (ERS/USDA (internet: www.ers.usda.gov/Data/FoodConsumption/spreadsheets.asp).show in one column both imports of wheat flour and products (macaroni and noodles). In order to estimate the wheat flour imports (as products), we first estimated the amount of wheat flour imports as flour (import codes included: hard spring wheat flour (1101000010), durum wheat flour (1101000020), white winter wheat flour (1101000030), Wheat or meslin flour, nesoi (1101000090), groats and meal of wheat, semolina (1103110020), and groats and meal of wheat, nesoi (1103110040). Then we estimated the wheat flour import (as product--macaroni and noodles) by subtracting wheat flour import as flour from Total Wheat Flour Imports(as reported in the Wheat Flour S&U Table). Import code 1101000000 (wheat flour) was not included in this analysis because there were not data for the analyzed period (see file US_IMP_whflour_monthly_calendar_year.xls)

Table 9. Wheat Flour Trade

| Year | Current Wheat Flour Estimates | | | | | | New Wheat Flour Estimates | | | | | | | |
|-----------------------------|-------------------------------|----------------|------------------|-------------------|----------------|------------------|---------------------------|-------------|------------------|-------------------|-------------|------------------|-----------|-----------|
| | Exports | | Imports | | Net Trade | | Exports | | Imports | | Net Trade | | | |
| | As wheat flour 1/ | As products 1/ | Flour + products | As wheat flour 2/ | As products 3/ | Flour + products | As wheat flour 1/ | As products | Flour + products | As wheat flour 2/ | As products | Flour + products | | |
| -----1000 hundreweight----- | | | | | | | | | | | | | | |
| 1995 | 23,770.00 | 702.00 | 24,472.00 | 3,351.04 | 5,566.96 | 8,918.00 | 15,554.00 | 23,770.00 | 4,541.49 | 28,311.49 | 3,351.04 | 8,853.14 | 12,204.18 | 16,107.31 |
| 1996 | 10,825.00 | 707.00 | 11,532.00 | 2,922.79 | 5,651.21 | 8,574.00 | 2,958.00 | 10,825.00 | 5,024.38 | 15,849.38 | 2,922.79 | 9,545.84 | 12,468.63 | 3,380.75 |
| 1997 | 11,190.00 | 1015.00 | 12,205.00 | 2,424.44 | 6,259.56 | 8,684.00 | 3,521.00 | 11,190.00 | 5,627.19 | 16,817.19 | 2,424.44 | 10,711.52 | 13,135.95 | 3,681.24 |
| 1998 | 12,551.00 | 1,215.00 | 13,766.00 | 2,957.32 | 6,787.68 | 9,745.00 | 4,021.00 | 12,551.00 | 5,761.81 | 18,312.81 | 2,957.32 | 11,946.40 | 14,903.73 | 3,409.08 |
| 1999 | 17,568.00 | 1,610.00 | 19,178.00 | 3,033.54 | 6,271.46 | 9,305.00 | 9,873.00 | 17,568.00 | 6,077.62 | 23,645.62 | 3,033.54 | 12,271.44 | 15,304.99 | 8,340.63 |
| 2000 | 16,053.00 | 1,685.00 | 17,738.00 | 3,373.60 | 6,289.40 | 9,663.00 | 8,075.00 | 16,053.00 | 6,233.33 | 22,286.33 | 3,373.60 | 12,791.08 | 16,164.68 | 6,121.65 |

1/ Source: USDA, Food consumption prices and expenditures (<http://www.ers.usda.gov/Data/FoodConsumption/spreadsheets.asp>).

2/ Source: USDA, Foreign Agricultural Service (<http://fas.usda.gov/ustrade>)

3/ The current supply and utilization table (ERS/USDA (internet: www.ers.usda.gov/Data/FoodConsumption/spreadsheets.asp).show in one column both imports of wheat flour and products (macaroni and noodles). In order to estimate the wheat flour imports (as products), we first estimated the amount of wheat flour imports as flour (import codes included: hard spring wheat flour (1101000010), durum wheat flour (1101000020), white winter wheat flour (1101000030), Wheat or meslin flour, nesoi (1101000090), groats and meal of wheat, semolina (1103110020), and groats and meal of wheat, nesoi (1103110040). Then we estimated the wheat flour import (as product--macaroni and noodles) by subtracting wheat flour import as flour from Total Wheat Flour Imports(as reported in the Wheat Flour S&U Table). Import code 1101000000 (wheat flour) was not included in this analysis because there were not data for the analyzed period (see file US_IMP_whflour_monthly_calendar_year.xls)

Notes:

Current estimates of wheat flour (as products) include only macaroni and noodle

New estimates of wheat flour (as products) include Mixes, pasta (uncooked, stuffed, couscous), cereals, and bread and similar products (includes corn chips, and similar savory snacks foods and pizza and quiche).

Table 10. New Estimates of U.S. Wheat Flour Exports by Type of Product and Major Importing Countries, 2000

| Product | 1000 cwt | % | Importing Country | 1000 cwt | % |
|--|----------|--------|-------------------|----------|--------|
| Mixes | 1,428.42 | 23.00 | Canada | 574.49 | 40.22 |
| | | | Japan | 373.58 | 26.15 |
| | | | Mexico | 233.10 | 16.32 |
| | | | Other countries | 247.25 | 17.31 |
| | | | All countries | 1,428.42 | 100.00 |
| Pasta | 1,469.67 | 24.00 | Canada | 1,180.72 | 80.34 |
| | | | Japan | 136.88 | 9.31 |
| | | | Mexico | 37.17 | 2.53 |
| | | | Other countries | 114.90 | 7.82 |
| | | | All countries | 1,469.67 | 100.00 |
| Cereals | 655.85 | 11.00 | Canada | 307.71 | 46.92 |
| | | | Mexico | 58.60 | 8.93 |
| | | | Liberia | 38.97 | 5.94 |
| | | | Other countries | 250.57 | 38.20 |
| | | | All countries | 655.85 | 100.00 |
| Bread | 2679.39 | 42.00 | Canada | 1,662.48 | 62.05 |
| | | | Mexico | 216.37 | 8.08 |
| | | | Japan | 103.72 | 3.87 |
| | | | Other countries | 696.82 | 26.00 |
| | | | All countries | 2,679.39 | 100.00 |
| Total wheat flour exports (all groups) | 6,233.33 | 100.00 | | | |

Note:

Japan also imported 6.083 (1000 cwt) of wheat flour as cereal

Liberia also imported 0.09 (1000 cwt) of wheat flour as mixes

Data analysis the export table is in:

Table 11. New Estimates of U.S. Wheat Flour Imports by Type of Product and Major Exporting Countries, 2000

| Product | 1000 cwt | % | Exporting Country | 1000 cwt | % |
|--|-----------|--------|-------------------|----------|--------|
| Mixes | 1,141.78 | 9.00 | Canada | 1,127.18 | 98.72 |
| | | | Taiwan | 2.36 | 0.21 |
| | | | Mexico | 2.27 | 0.20 |
| | | | Other countries | 9.97 | 0.87 |
| | | | All Countries | 1,141.78 | 100.00 |
| Pasta | 6,302.57 | 49.00 | Italy | 3,164.20 | 50.20 |
| | | | Canada | 1,252.93 | 19.88 |
| | | | Mexico | 655.27 | 10.40 |
| | | | Other countries | 1,230.17 | 19.52 |
| | | | All Countries | 6,302.57 | 100.00 |
| Cereals | 385.99 | 3.00 | Canada | 335.76 | 86.99 |
| | | | Mexico | 26.22 | 6.79 |
| | | | Venezuela | 4.36 | 1.13 |
| | | | Other countries | 19.65 | 5.09 |
| | | | All Countries | 385.99 | 100.00 |
| Bread | 4,960.76 | 39.00 | Canada | 2,816.43 | 56.77 |
| | | | Mexico | 495.96 | 10.00 |
| | | | Denmark | 253.52 | 5.11 |
| | | | Other countries | 1,394.85 | 28.12 |
| | | | All Countries | 4,960.76 | 100.00 |
| Total wheat flour imports (all groups) | 12,791.10 | 100.00 | | | |

Note:

Italy also exported 0.049 (1000 cwt) wheat flour as cereal and 167.09 (1000 cwt) wheat flour as bread
 Taiwan also exported 92.26 (1000 cwt) wheat flour as pasta, 0.188 (1000 cwt) wheat flour as cereal and 41.90(1000 cwt) wheat flour as bread.

Venezuela also exported 0.03 (1000 cwt) wheat flour as mixes, 11.00 (1000 cwt) wheat flour as pasta, and 19.77(1000 cwt) wheat flour as bread.

Denmark also exported 1.15 (1000 cwt) wheat flour as pasta and 0.989 (1000 cwt) wheat flour as cereal.

Data analysis the import table is in:

Figure 1. Quantity of Wheat Flour Exports

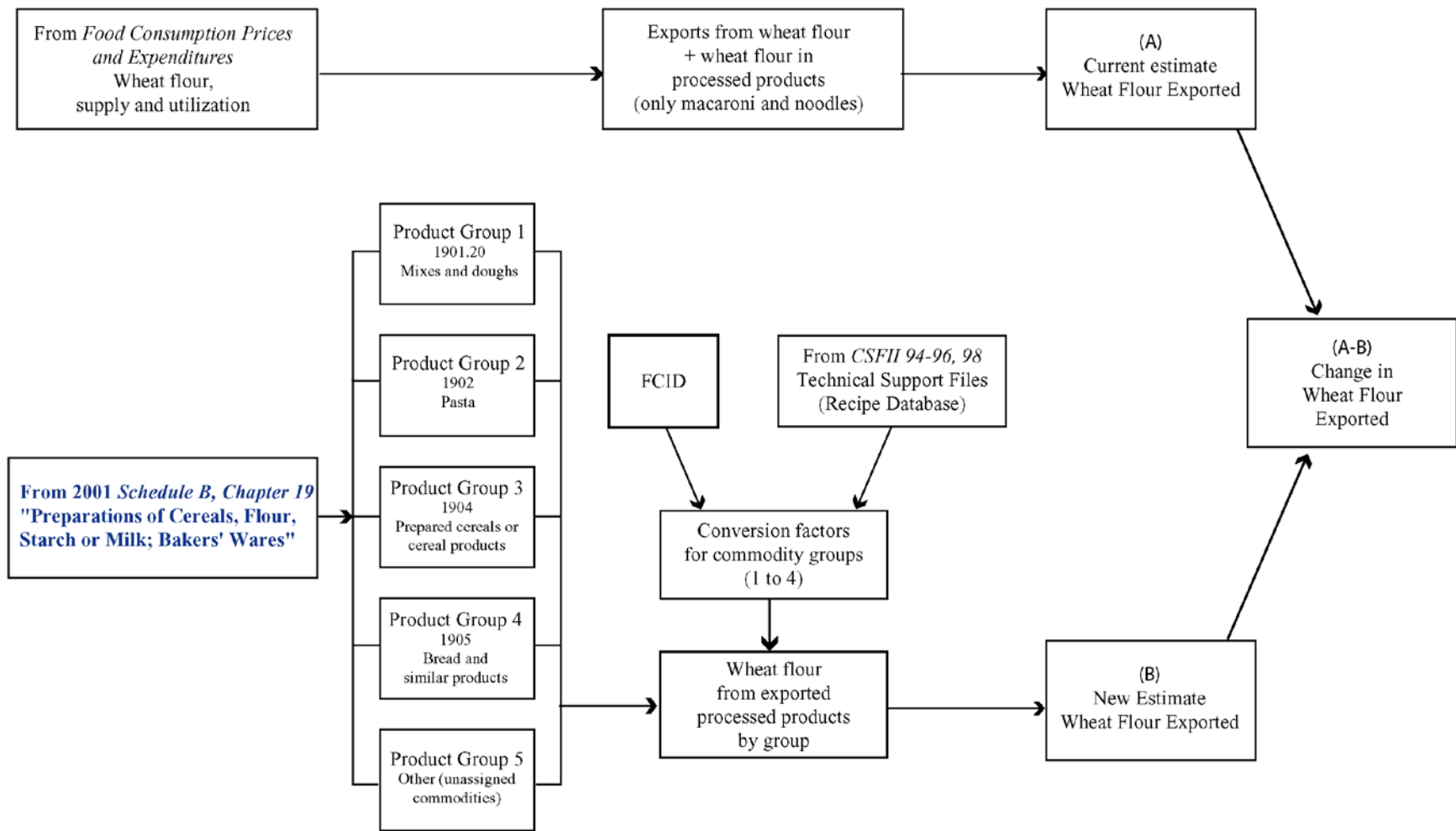
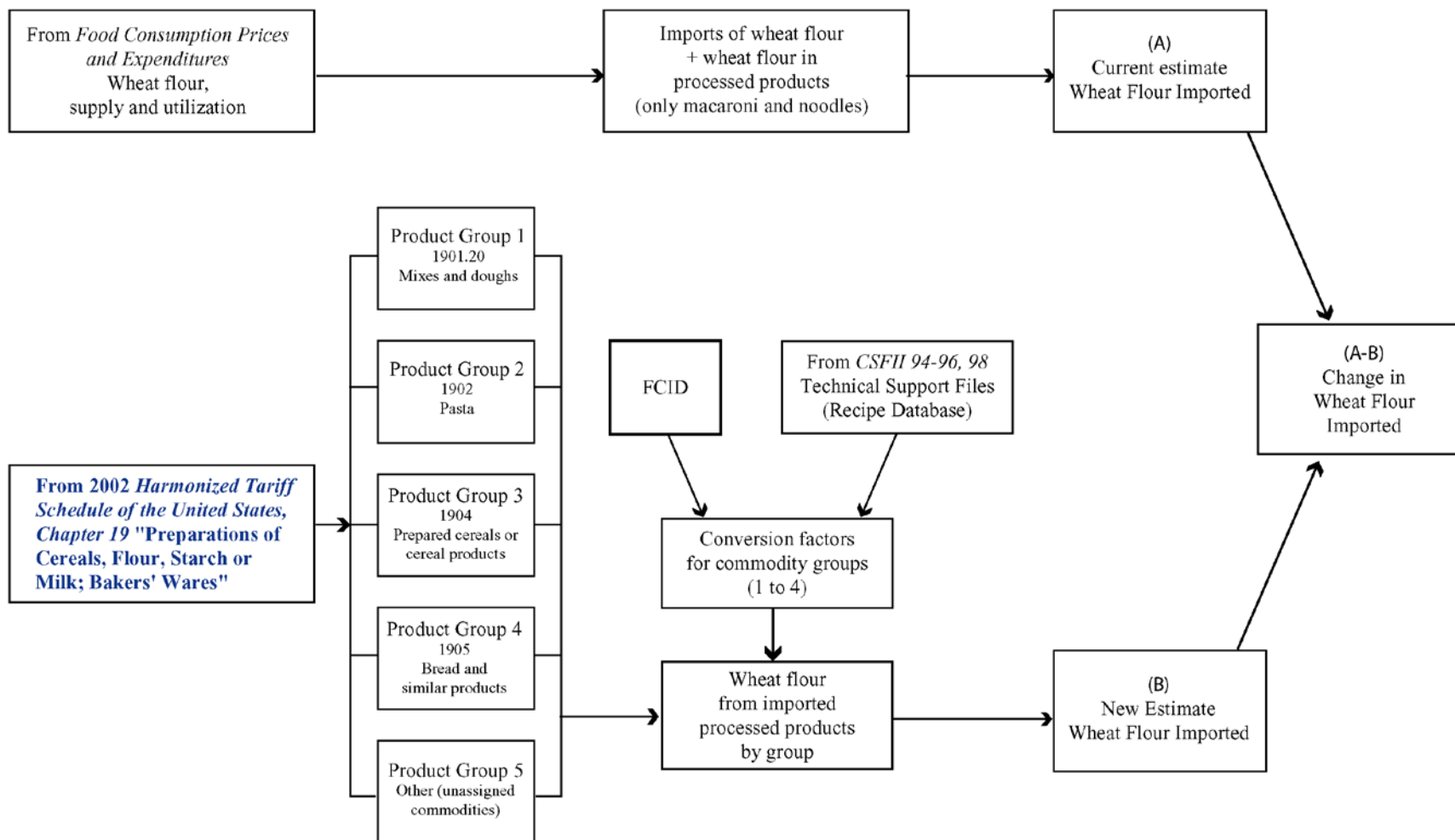
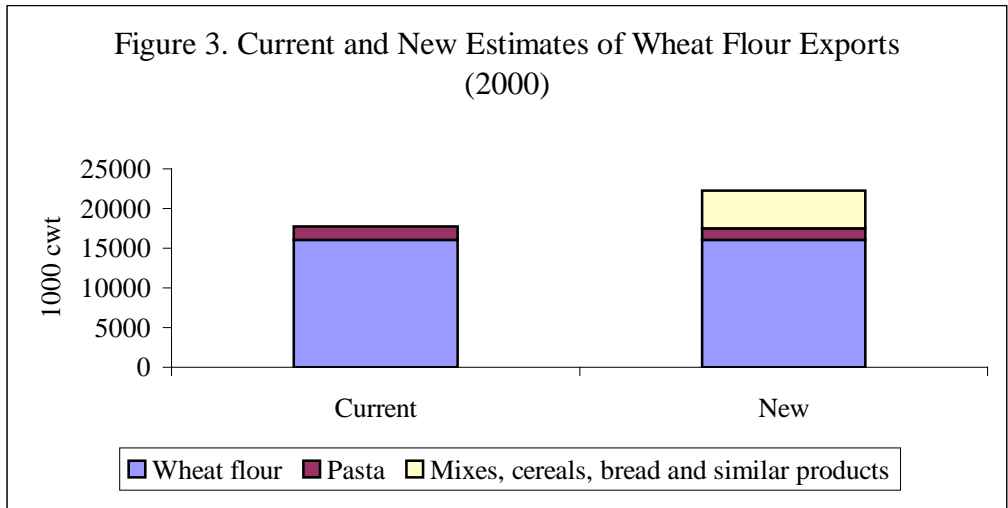


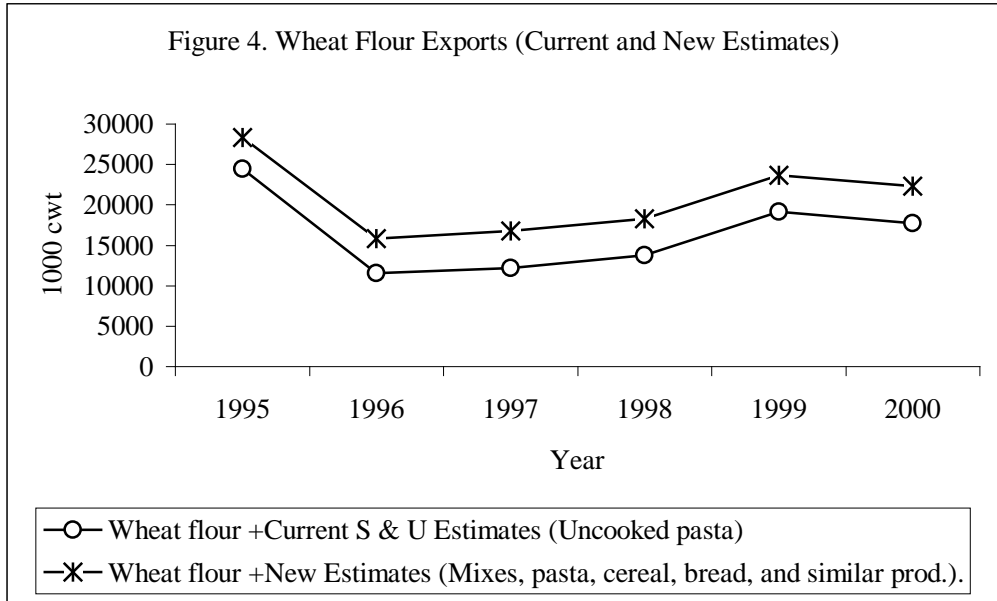
Figure 2. Quantity of Wheat Flour Imports





Source: Current estimates (USDA, Food consumption prices and expenditures
<http://www.ers.usda.gov/Data/FoodConsumption/spreadsheets.asp>)

New estimates: Data for new estimates: <http://www.fas.usda.gov/ustrade/>. Food commodity Intake database (FCID) and Technical support files (from CSFII 1994-96,98)

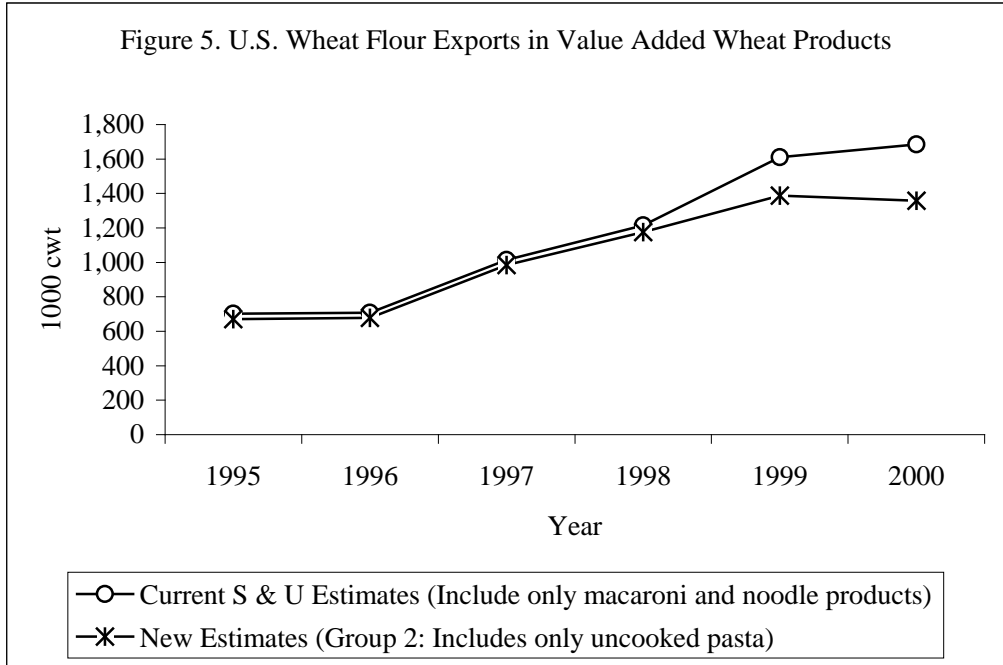


Source: Current estimates (USDA, Food consumption prices and expenditures
<http://www.ers.usda.gov/Data/FoodConsumption/spreadsheets.asp>)

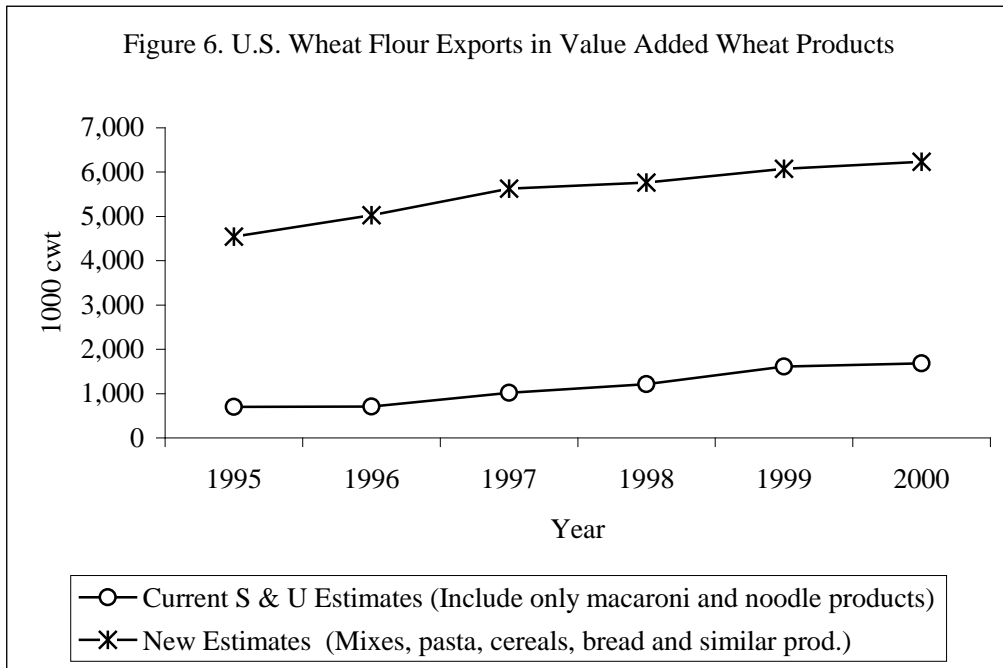
New estimates: Data for new estimates: <http://www.fas.usda.gov/ustrade/>. Food commodity Intake database (FCID) and Technical support files (from CSFII 1994-96,98)

Note: Pasta includes uncooked, Stuffed pasta, whether or not cooked or otherwise prepared (canned or frozen); other pasta (pasta nesoi); couscous.

Bread and similar products includes corn chips and similar savory snack foods and pizza and quiche.

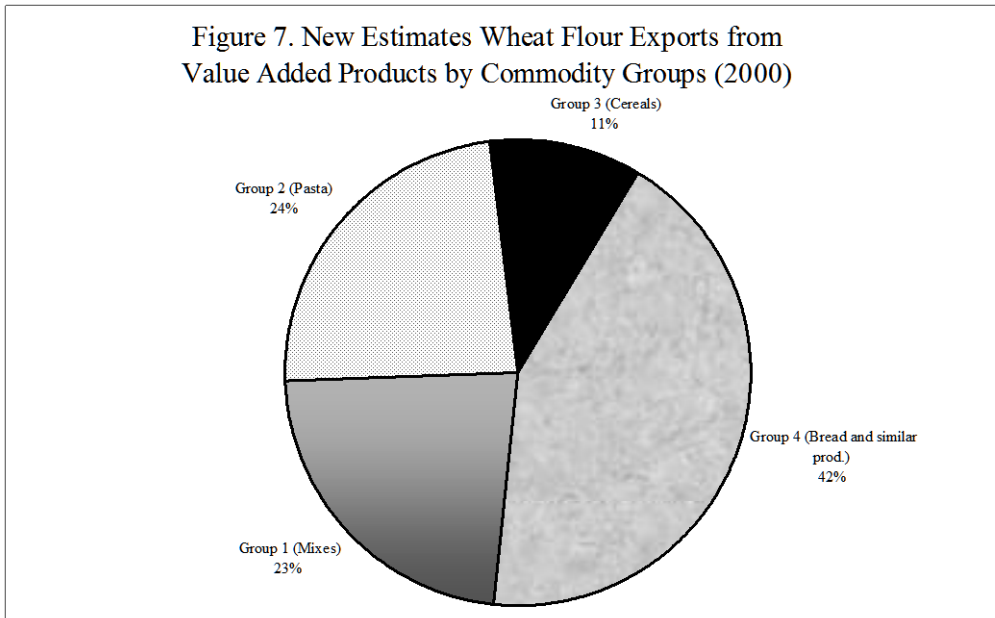


Source: Current estimates (USDA, Food consumption prices and expenditures <http://www.ers.usda.gov/Data/FoodConsumption/spreadsheets.asp>)
 Data for new estimates: <http://www.fas.usda.gov/ustrade/>, Food commodity Intake database (FCID) and Technical support files (from CSFII 1994-96,98)



Source: Current estimates (USDA, Food consumption prices and expenditures <http://www.ers.usda.gov/Data/FoodConsumption/spreadsheets.asp>)
 Data for new estimates: <http://www.fas.usda.gov/ustrade/>, Food commodity Intake database (FCID) and Technical support files (from CSFII 1994-96,98)
 Note: Pasta includes uncooked, canned and frozen (stuffed, nesoi pasta); and couscous
 Bread and similar products includes corn chips and similar savory snack foods and pizza and quiche

Figure 7. New Estimates Wheat Flour Exports from Value Added Products by Commodity Groups (2000)



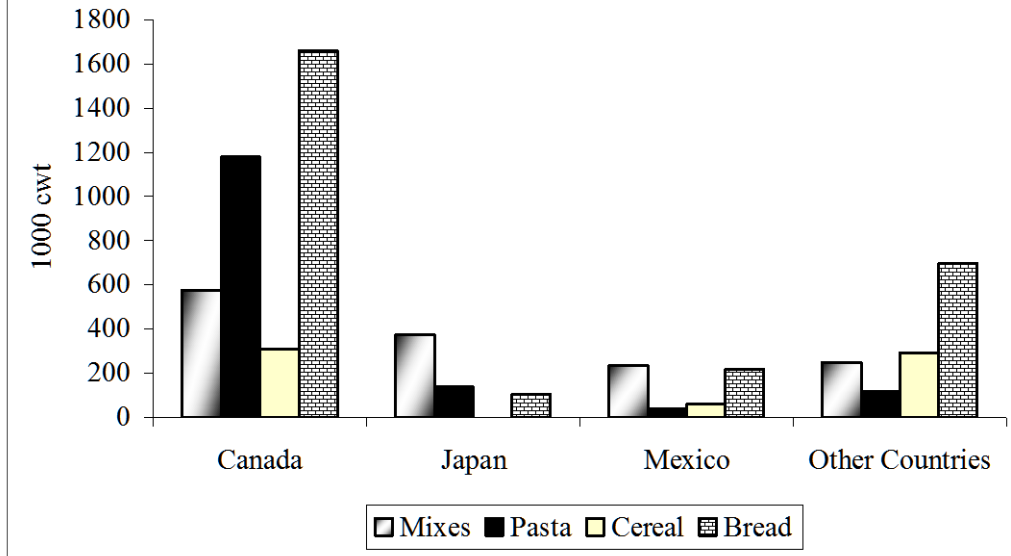
Data for new estimates: <http://www.fas.usda.gov/ustrade/>, Food commodity Intake database (FCID) and Technical support files (from CSFII 1994-96,98)

Note: Pasta includes uncooked, canned and frozen (stuffed, nesoi pasta); and couscous

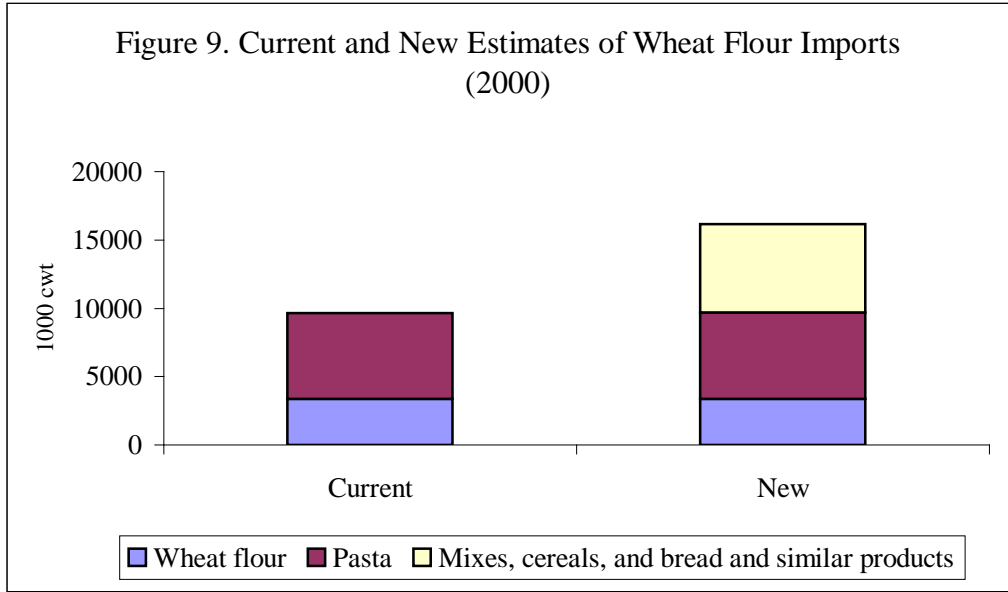
Bread and similar products includes corn chips and similar savory snack foods and pizza and quiche

New estimates: <http://www.census.gov/foreign-trade/schedules/b/2002/schdb.txt>, Food commodity Intake database (FCID) and Technical support files (from CSFII 1994-96,98)

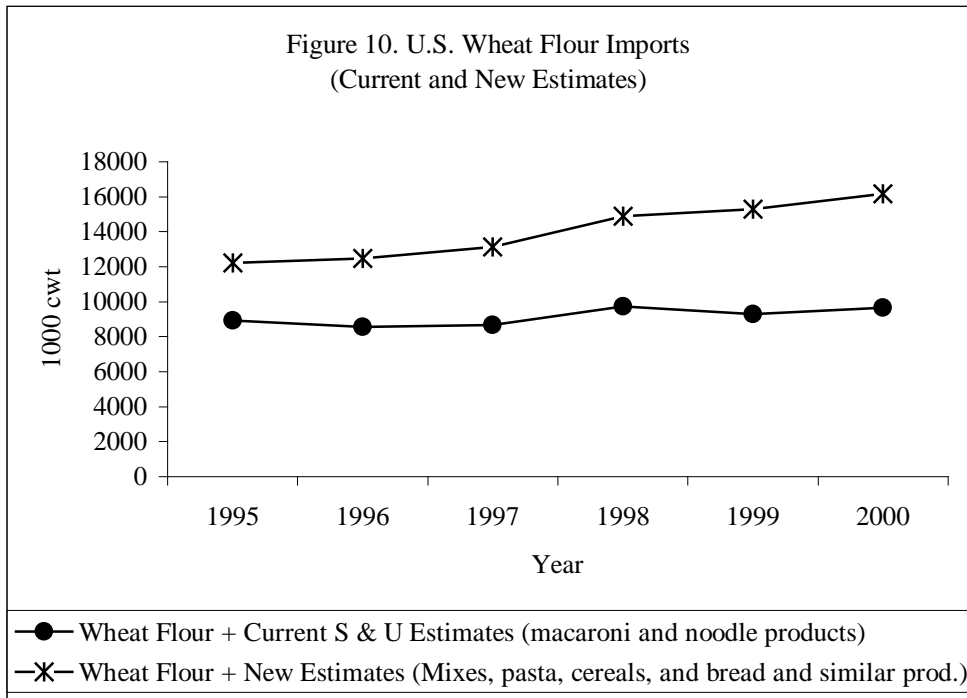
Figure 8. U.S. Wheat Flour Exports as Products by Major Importing Countries, 2000



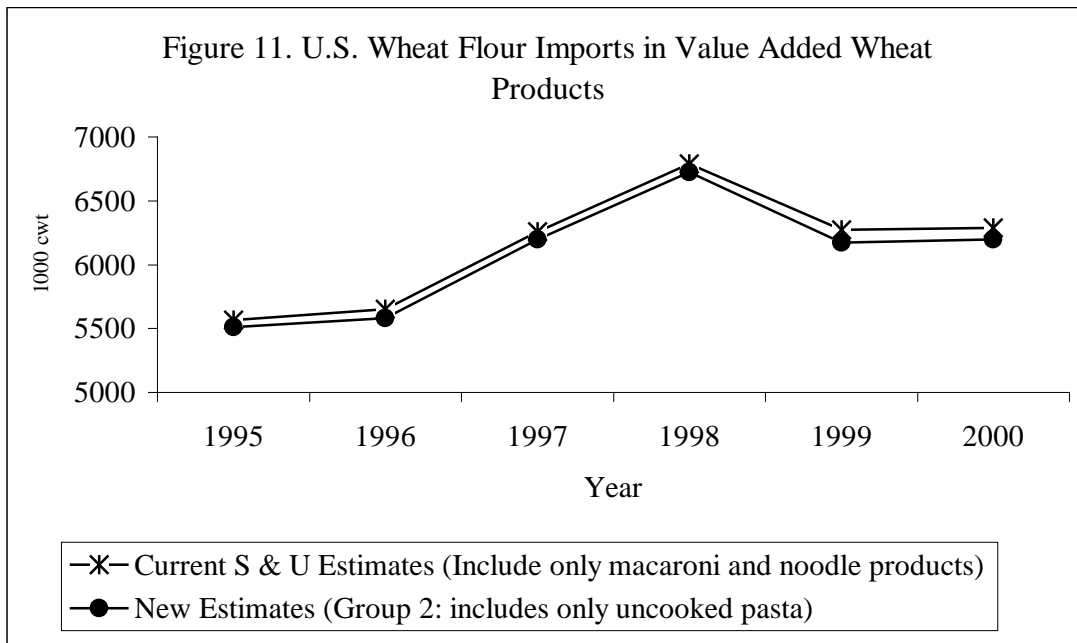
Data for new estimates: <http://www.fas.usda.gov/ustrade/>, Food commodity Intake database (FCID) and Technical support files (from CSFII 1994-96,98)



Source: Current estimates (USDA, Food consumption prices and expenditures <http://www.ers.usda.gov/Data/FoodConsumption/spreadsheets.asp>)
 New estimates: Data for new estimates: <http://www.fas.usda.gov/ustrade/>. Food commodity Intake database (FCID) and Technical support files (from CSFII 1994-96,98)

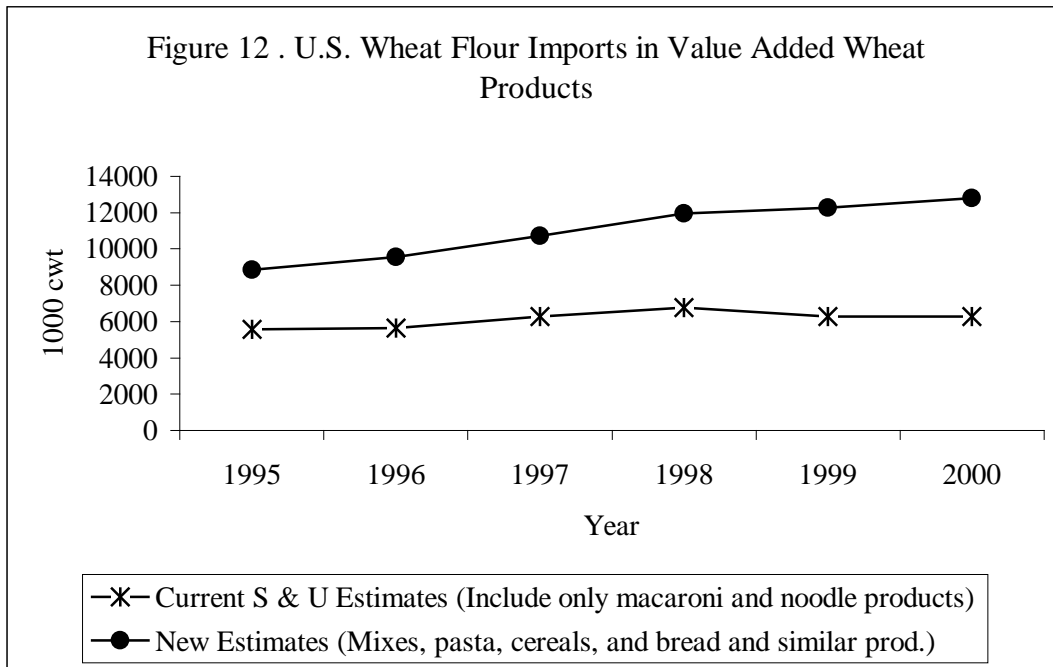


Source: Current estimates (USDA, Food consumption prices and expenditures <http://www.ers.usda.gov/Data/FoodConsumption/spreadsheets.asp>)
 New estimates: Data for new estimates: <http://www.fas.usda.gov/ustrade/>, Food commodity Intake database (FCID) and Technical support files (from CSFII 1994-96,98)
 Note: Pasta includes uncooked, Stuffed pasta, whether or not cooked or otherwise prepared (canned or frozen); other pasta (pasta nesoi); couscous.
 Bread and similar products includes corn chips and similar savory snack foods and pizza and quiche.



Source: Current estimates (USDA, Food consumption prices and expenditures
<http://www.ers.usda.gov/Data/FoodConsumption/spreadsheets.asp>)

Data for new estimates: <http://www.fas.usda.gov/ustrade/>, Food commodity Intake database (FCID) and Technical support files (from CSFII 1994-96,98)

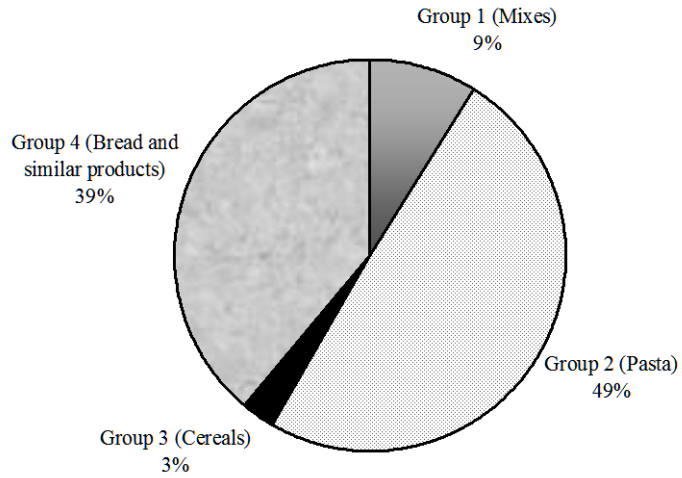


Source: Current estimates (USDA, Food consumption prices and expenditures
<http://www.ers.usda.gov/Data/FoodConsumption/spreadsheets.asp>)

Data for new estimates: <http://www.fas.usda.gov/ustrade/>, Food commodity Intake database (FCID) and Technical support files (from CSFII 1994-96,98)

Note: Pasta includes uncooked, canned and frozen (stuffed, nesoi pasta); and couscous
 Bread and similar products includes corn chips and similar savory snack foods and pizza and quiche

Figure 13. New Estimates Wheat Flour Imports from Valued Added Products by Commodity Group (2000)

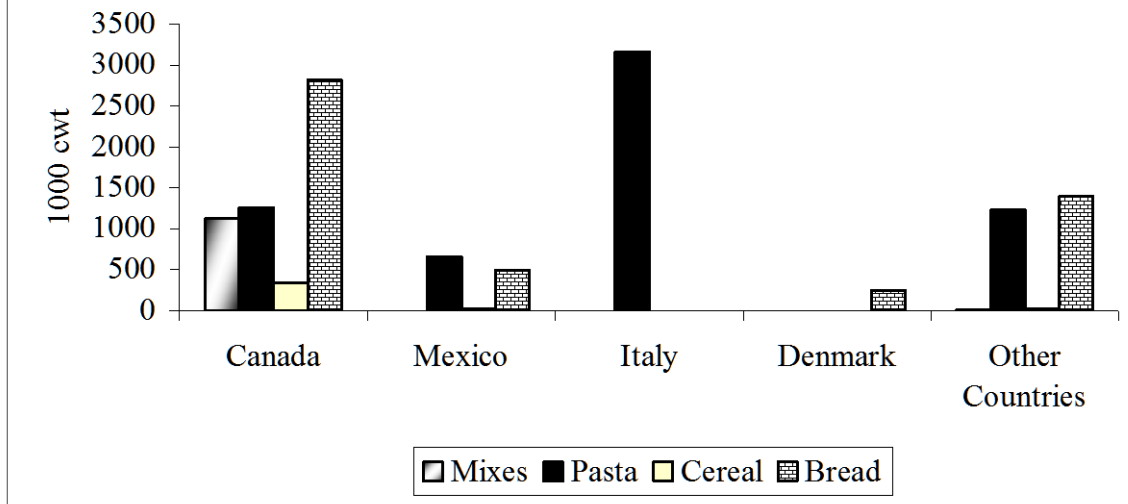


Data for new estimates: <http://www.fas.usda.gov/ustrade/>, Food commodity Intake database (FCID) and Technical support files (from CSFII 1994-96,98)

Note: Pasta includes uncooked, canned and frozen (stuffed, nesoi pasta); and couscous

Bread and similar products includes corn chips and similar savory snack foods and pizza and quiche

Figure 14. U.S. Wheat Flour Imports as Products by Major Exporting Countries, 2000



Data for new estimates: <http://www.fas.usda.gov/ustrade/>, Food commodity Intake database (FCID) and Technical support files (from CSFII 1994-96,98)